



Republic of the Philippines  
**Department of Education**  
 REGION VIII - EASTERN VISAYAS

June 9, 2023

**REGIONAL MEMORANDUM**

No. **576** s.2023

**PLANNING CONFERENCE AND ON- SITE INSPECTION AND  
 GATHERING OF REQUIREMENTS ON SCHOOL  
 FURNITURE DELIVERED IN CALENDAR  
 YEARS 2016-2019**

To: Schools Division Superintendents  
 Regional Office Division Chiefs (FINANCE, QAD, ESSD)  
 School Governance and Operations Division Chiefs  
 Regional and Division Engineers  
 Public Elementary and Secondary School Heads  
 All Others Concerned

1. To facilitate the urgent compliance with the Notices of Suspension issued by the Commission on Audit (COA) in Calendar Years 2020 and 2021 on procurement of School Furniture, this Office, through the Education Support Services Division in coordination with the other functional Divisions/Sections shall conduct a **Planning Conference and On-Site Inspection and Gathering of Requirements on School Furniture Delivered in Calendar Years 2016-2019** on the following dates specified below:

ACTIVITY	DIVISION	VENUE	DATE	PARTICIPANTS
1. Planning Conference	Samar	SDO Conference Hall	June 14, 2023 10:00 AM	Teams 1 and 2 and SGOD Chief/Representative, Division Supply Officer, and Legal Officer Refer to RM. 569, s.2023
2. Planning Conference and On-Site Submission of the Documents at the Venue	Leyte, So. Leyte, Ormoc City, Tacloban City, and Eastern Samar	Leyte Division Old Conference Hall 3 <sup>rd</sup> Floor	June 15, 2023 8:00 AM	Team 3, SGOD Chiefs/ Representatives, Division Supply Officer, Legal Officers, Refer to RM 569, s. 2023, and concerned School Heads whose schools have been identified as the recipients of the school furniture delivered in C.Y.



				2016-2019 who have not submitted yet the complete COA requirements.
3. On site Submission at the Venue	Samar	SDO Conference Hall	June 15, 2023	Teams 1 and 2 and SGOD Chief Refer to RM 569, s.2023, Division Supply Officer, Division Legal Officer/s, and concerned School Heads whose schools have been identified as the recipients of the school furniture delivered in C.Y. 2016-2019 who have not submitted yet the complete COA requirements.
4. On-Site Submission at the Venue	Northern Samar	SDO Northern Samar Conference Hall	June 16, 2023	Zaira D. Ultra, Div. Engineer, SGOD Chief, Division Supply Officer, Legal Officer, and identified School Heads as the recipients of the school furniture delivered in C.Y.2016-2019 who have not submitted yet the complete COA requirements.
5. On-Site Inspection and Gathering of Documents in some remaining schools	See above SDOs	Specific Schools	June 13-23, 2023	All Teams with the SGOD Chiefs/ Representatives, School Heads, School Property Custodian, and School Inspectorate Team of schools who have not submitted yet the complete COA requirements.

2. The participants to this event are the ESSD and QAD Chiefs, Regional and Division Engineers, Contract of Service Engineers, SGOD Chiefs, Division Legal Officers, other Regional / Division Office personnel, select School Heads who have not submitted yet the complete COA requirements, School Property Custodian, and School Inspectorate Team.



3. These activities aim to:
  - a. plan for the possible quick strategy to gather the documents;
  - b. monitor and inspect the school furniture delivered;
  - c. gather the additional requirements of the COA; and
  - d. thresh-out some issues and concerns relative to the submission of said requirements.
4. The School Heads who are now assigned in the identified recipient schools of the said school furniture delivered in C.Y. 2016-2019 who have not submitted yet the complete COA requirements, are mandated to bring along with them the pictures and the affidavit as required by the COA during the on-site submission at the identified venue.
5. The Division Legal Officers are likewise requested to facilitate the notarial services needed in the affidavit.
6. The monitors during the on-site inspection shall bring with them cameras for documentation purposes. Likewise, they shall be allowed to have the **Compensatory Time Off (CTO)** for the dates that fall on holidays and weekends.
7. The travel and other expenses which shall be incurred in this activity shall be charged against the respective Local Funds or any available funds, subject to the usual accounting and auditing rules and regulations.
9. The Schools Division Offices shall ensure the availability of the vehicles to facilitate the said monitoring event and to give this concern the prime priority.
10. This **Memorandum** shall serve as the Travel Authority of the identified personnel found in Enclosure No. 1 in Regional Memo No. 569, s. 2023, while the other personnel involved not listed in the said Enclosure shall make their separate Travel Authority.
7. Immediate dissemination of and compliance with this Memorandum are desired.

  
**EVELYN R. FETALVERO, CESO IV**  
Regional Director

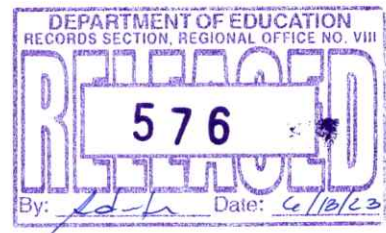
Enclosures: Specifications of School Furniture and Affidavit Template

References: As stated

To be indicated in the Perpetual Index under the following subjects:

INSPECTION      SCHOOL FURNITURE

ESSD- EFS-RMG



## CY 2019 CLUSTER 5 – LEYTE & SOUTHERN LEYTE

Division	School ID	School Name	No. of School Site	ELEM. 2-SEATER TABLE & CHAIRS SET (23 SET/CL)	JHS 2-SEATER TABLE & CHAIRS SET (23 SET/CL)	SHS 2-SEATER TABLE & CHAIRS SET (20 SET/CL)	TEACHERS' TABLE & CHAIR SET	STATUS OF DELIVERY	WITH PICTURE	WITH AFFIDAVIT	REMARKS
Leyte	121608	Tag-abaca ES	1	138	-	-	6	COMPLETELY DELIVERED			
Leyte	303387	Leyte Agro-Industrial School	1	-	138	-	6	COMPLETELY DELIVERED	✓	✓	
Leyte	303390	Leyte NHS	1	-	138	-	6	COMPLETELY DELIVERED	✓		
Leyte	313308	Juan V. Delantar NHS	1	-	92	-	4	COMPLETELY DELIVERED			
Leyte	121834	Daja ES School	1	92	-	-	4	COMPLETELY DELIVERED			
Leyte	121836	Hda. Maria ES	1	92	-	-	4	COMPLETELY DELIVERED			
Leyte	121845	Sangabon ES School	1	92	-	-	4	COMPLETELY DELIVERED			
Leyte	121846	Taglawigan ES	1	92	-	-	4	COMPLETELY DELIVERED			
Leyte	303411	Muertegui NHS	1	-	138	-	6	COMPLETELY DELIVERED			
Leyte	303416	Pastor Salazar NHS	1	-	92	-	4	COMPLETELY DELIVERED	✓	✓	
Leyte	303442	Villaba NCHS	1	-	138	-	6	COMPLETELY DELIVERED			
Leyte	120984	Albuera North CS	1	46	-	-	2	COMPLETELY DELIVERED			
Leyte	120986	Cambalading ES	1	46	-	-	2	COMPLETELY DELIVERED			
Leyte	120990	Seguinon ES	1	46	-	-	2	COMPLETELY DELIVERED			
Leyte	120991	Sherwood ES	1	46	-	-	2	COMPLETELY DELIVERED			
Leyte	120992	Soob ES	1	46	-	-	2	COMPLETELY DELIVERED			
Leyte	120994	Talisayan ES	1	46	-	-	2	COMPLETELY DELIVERED			
Leyte	121002	San Pedro ES	1	46	-	-	2	COMPLETELY DELIVERED			
Leyte	303368	Dr. Geronimo B. Zaldivar Memorial School of Fisheries	1	-	46	-	2	COMPLETELY DELIVERED			
Leyte	NOT-IN-NSBI	Bilwang NHS	1	-	-	120	6	COMPLETELY DELIVERED			

Department of Education Regional Office VIII (Eastern Visayas)

Leyte	121671	San Vicente Elementary School	I	69	-	-	3	COMPLETELY DELIVERED	✓	✓	
Leyte	313339	Sta. Rosa National High School	1	-	92	-	4	COMPLETELY DELIVERED			
Leyte	121721	Casilda ES	I	46	-	-	2	COMPLETELY DELIVERED			
Leyte	121722	Lamanoc ES	I	46	-	-	2	COMPLETELY DELIVERED			
Leyte	121723	Libas ES	1	46	-	-	2	COMPLETELY DELIVERED			
Leyte	121728	Mahayag Primary School	I	46	-	-	2	COMPLETELY DELIVERED			
Leyte	121730	Merida CS	I	46	-	-	2	COMPLETELY DELIVERED D			
Leyte	121731	Minesite ES	1	46	-	-	2	COMPLETELY DELIVERED			
Leyte	121732	Puerto Bello ES	I	46	-	-	2	COMPLETELY DELIVERED			
Leyte	121765	Caduhaan ES	I	46	-	-	2	COMPLETELY DELIVERED			
Leyte	121766	Cambacbac ES	1	46	-	-	2	COMPLETELY DELIVERED	✓	✓	
Leyte	121770	Lomonon ES	I	46	-	-	2	COMPLETELY DELIVERED			
Leyte	121773	Palompon North CS	I	46	-	-	2	COMPLETELY DELIVERED			
Leyte	121774	Sabang ES	1	46	-	-	2	COMPLETELY DELIVERED	✓	✓	
Leyte	121778	Santiago ES	I	46	-	-	2	COMPLETELY DELIVERED			
Leyte	121781	Tinabilan ES	I	46	-	-	2	COMPLETELY DELIVERED	✓	✓	
Leyte	121783	Tinubdan ES	1	46	-	-	2	COMPLETELY DELIVERED			
Leyte	121788	Cangcosme ES	1	46	-	-	2	COMPLETELY DELIVERED			
Leyte	121790	Canipaan ES	I	46	-	-	2	COMPLETELY DELIVERED			
Leyte	121792	Cantuhaon ES	1	46	-	-	2	COMPLETELY DELIVERED			

Department of Education Regional Office VIII (Eastern Visayas)

Leyte	121795	Duljugan ES	1	46	-	-	2	COMPLETELY DELIVERED			
Leyte	121797	Magsaysay ES	1	46	-	-	2	COMPLETELY DELIVERED			
Leyte	121800	Parrilla ES	1	46	-	-	2	COMPLETELY DELIVERED			
Leyte	303396	Lomonon NHS	1	-	46	-	2	COMPLETELY DELIVERED			
Leyte	303438	Tinabilan NHS	1	-	46	-	2	COMPLETELY DELIVERED	✓	✓	
Leyte	303375	Hindang National High School		-	138	-	6	COMPLETELY DELIVERED	✓		
Maasin City	238003	Maasin City SPED Center	1	276	-	-	12	COMPLETELY DELIVERED	✓	✓	
Southern Leyte	121995	Beniton MG Elementary School	1	46	-	-	2	COMPLETELY DELIVERED	✓	✓	
Southern Leyte	122002	Divisoria Elementary School	1	46	-	-	2	COMPLETELY DELIVERED			
Southern Leyte	122005	Hilaan Elementary School	1	46	-	-	2	COMPLETELY DELIVERED	✓	✓	
Southern Leyte	122019	San Vicente Primary School	1	46	-	-	2	COMPLETELY DELIVERED	✓	✓	
Southern Leyte	303451	Divisoria NHS	1	-	138	-	6	COMPLETELY DELIVERED	✓	✓	
Southern Leyte	122030	Hinunangan East Central School	1	138	-	-	6	COMPLETELY DELIVERED			
Southern Leyte	303446	Canipaan NHS	1	-	138	-	6	COMPLETELY DELIVERED			
Southern Leyte	122073	Lungsodaan Elementary School	1	92	-	-	4	COMPLETELY DELIVERED			
Southern Leyte	122109	Pres. Quezon Elementary School	1	46	-	-	2	COMPLETELY DELIVERED	✓	✓	
Southern Leyte	313409	Liloan National Technical Vocational High School	1	-	345	-	15	COMPLETELY DELIVERED			
Southern Leyte	313409	Liloan National Technical Vocational High School		-	345	-	15	COMPLETELY DELIVERED			
Southern Leyte	122189	Macrohon Central School	1	138	-	-	6	COMPLETELY DELIVERED			
Southern Leyte	122213	San Vicente Elementary School	1	92	-	-	4	COMPLETELY DELIVERED	✓		

Department of Education Regional Office VIII (Eastern Visayas)

Southern Leyte	122301	San Isidro Elementary School	I	46	-	-	2	COMPLETELY DELIVERED			
Southern Leyte	313407	New Guinsaugon National High School	1	-	92	-	4	COMPLETELY DELIVERED			
Southern Leyte	122252	San Juan Central Elementary School with SPED CENTER	I	69	-	-	3	COMPLETELY DELIVERED	✓	✓	
Southern Leyte	122236	Kinachawa Elementary School	I	46	-	-	2	COMPLETELY DELIVERED			
Southern Leyte	303455	Esperanza National High School	1	-	138	-	6	COMPLETELY DELIVERED	✓	✓	
Southern Leyte	122052	Awayon Elementary School	I	46	-	-	2	COMPLETELY DELIVERED	✓	✓	
Southern Leyte	122280	Sogod Central School	I	138	-	-	6	COMPLETELY DELIVERED			
Southern Leyte	192007	San Antonio Elementary School	1	46	-	-	2	COMPLETELY DELIVERED	✓		

### CY 2019 LEYTE CLUSTER 4

Division	School ID	School Recipient	ELEM. 2- SEATER TABLE & CHAIRS SET (23 SET/CL)	JHS 2- SEATER TABLE & CHAIRS SET (23 SET/CL)	TEACHERS' TABLE & CHAIR SET	STATUS OF DELIVERY	WITH PICTURE	WITH AFFIDAVIT	REMARKS
Leyte	121745	San Agustin ES	46	-	2	COMPLETELY COMPLETED			
Leyte	121749	Baras ES	46	-	2	COMPLETELY COMPLETED			
Leyte	121753	Candahug ES	46	-	2	COMPLETELY COMPLETED			
Leyte	121759	Naga-Naga ES	46	-	2	COMPLETELY COMPLETED			
Leyte	121762	San Fernando ES	46	-	2	COMPLETELY COMPLETED			
Leyte	303339	Anahaway NHS	-	46	2	COMPLETELY COMPLETED			
Leyte	303424	San Joaquin NHS	-	46	2	COMPLETELY COMPLETED			
Leyte	121851	Cabatianuhan ES	46	-	2	COMPLETELY COMPLETED	✓		
Leyte	121858	Lukay ES	46	-	2	COMPLETELY COMPLETED	✓		
Leyte	121861	Mawodpawod ES	46	-	2	COMPLETELY COMPLETED			
Leyte	121865	San Miguel CS	46	-	2	COMPLETELY COMPLETED	✓		
Leyte	121867	Sta. Cruz ES	46	-	2	COMPLETELY COMPLETED			
Leyte	191526	Cahumayhumayan ES	69	-	3	COMPLETELY COMPLETED			
Leyte	303386	Kiling NHS	-	46	2	COMPLETELY COMPLETED	✓		
Leyte	121949	Capangihan ES	46	-	2	COMPLETELY COMPLETED			
Leyte	121950	Daniel Z. Romualdez Memorial ES	46	-	2	COMPLETELY COMPLETED			
Leyte	121951	Malbog ES	46	-	2	COMPLETELY COMPLETED	✓	✓	
Leyte	121952	Olot ES	46	-	2	COMPLETELY COMPLETED	✓	✓	
Leyte	121953	Opong ES	46	-	2	COMPLETELY COMPLETED	✓		



Department of Education Regional Office VIII (Eastern Visayas)

Leyte	121956	Tanghas ES	46	-	2	COMPLETELY COMPLETED	✓	✓	
Leyte	121957	Telegrafo ES	46	-	2	COMPLETELY COMPLETED			
Leyte	303391	Daniel Z. Romualdez State Comprehensive School of Fisheries	-	46	2	COMPLETELY COMPLETED			
Leyte	303440	Tolosa NHS	-	46	2	COMPLETELY COMPLETED			
Leyte	121026	Barugo I CS	138	-	6	COMPLETELY COMPLETED	✓	✓	
Leyte	313324	Barugo NHS	-	92	4	COMPLETELY COMPLETED	✓	✓	
Leyte	303353	Burauen Comprehensive NHS	-	184	8	COMPLETELY COMPLETED			
Leyte	303354	Burauen NHS	-	138	6	COMPLETELY COMPLETED	✓		
Leyte	313325	Hibunauan NHS	-	92	4	COMPLETELY COMPLETED	✓		
Leyte	303341	Asuncion S. Melgar NHS	-	92	4	COMPLETELY COMPLETED			
Leyte	303367	Don Mariano Salvacion Memorial NHS	-	92	4	COMPLETELY COMPLETED			
Leyte	344690	Pinamopoan Senior High School	-	138	6	COMPLETELY COMPLETED			
Leyte	303362	Carigara National Vocational School	-	230	10	COMPLETELY COMPLETED			
Leyte	313307	Jugaban NHS	-	184	8	COMPLETELY COMPLETED			
Leyte	303417	Patoc National High School	-	92	4	COMPLETELY COMPLETED			
Leyte	344695	Patoc NHS	-	138	6	COMPLETELY COMPLETED			
Leyte	121344	Dulag CS	138	-	6	COMPLETELY COMPLETED			
Leyte	303355	Cabacungan NHS	-	138	6	COMPLETELY COMPLETED			
Leyte	303371	Granja-Kalinawan NHS	-	414	18	COMPLETELY COMPLETED	✓	✓	
Leyte	313304	Agapito Amado Memorial NHS	-	92	4	COMPLETELY COMPLETED			
Leyte	344725	Julita Senior High School	-	138	6	COMPLETELY COMPLETED			
Leyte	303342	Atty. Roque A. Marcos Memorial School (La Paz NHS)	-	207	9	COMPLETELY COMPLETED			

Department of Education Regional Office VIII (Eastern Visayas)

Leyte	121627	Sta. Isabel ES	92	-	4	COMPLETELY COMPLETED			
Leyte	303397	Macarthur NHS	-	184	8	COMPLETELY COMPLETED			
Leyte	303407	Mayorga NHS	-	184	8	COMPLETELY COMPLETED			
Leyte	303380	Juan Villablanca Memorial High School	-	138	6	COMPLETELY COMPLETED			
Leyte	313330	Manaybanay NHS	-	92	4	COMPLETELY COMPLETED			
Leyte	303382	Justimbaste-Remandaban NHS	-	92	4	COMPLETELY COMPLETED	✓		
Leyte	313317	Felix Caneja Lafuente NHS	-	92	4	COMPLETELY COMPLETED			

**CY 2018 CLUSTER 2-LOT 5**

Division	School ID	School Name	No. of units delivered based on IAR				STATUS OF DELIVERY	WITH PICTURE	WITH AFFIDAVIT	REMARKS
			ELEM. 2-SEATER TABLE & CHAIRS SET (23 SET/CL)	JHS 2-SEATER TABLE & CHAIRS SET (23 SET/CL)	SHS 2-SEATER TABLE & CHAIRS SET (20 SET/CL)	TEACHERS' TABLE & CHAIR SET				
Tacloban City	124254	Bliss ES School	92	-	-	4	COMPLETELY DELIVERED	✓		
Tacloban City	195003	Utap ES School	138	-	-	6	COMPLETELY DELIVERED	✓	✓	
Tacloban City	303663	Leyte NHS	-	92	-	4	COMPLETELY DELIVERED	✓	✓	
Tacloban City	303663	Leyte NHS	-	414	-	18	COMPLETELY DELIVERED	✓	✓	
Tacloban City	303667	San Jose NHS	-	184	-	8	COMPLETELY DELIVERED	✓	✓	
Tacloban City	303667	San Jose NHS	-	368	-	16	COMPLETELY DELIVERED	✓	✓	
Tacloban City	303669	Tacloban National Agricultural School	-	368	-	16	COMPLETELY DELIVERED	✓	✓	
Tacloban City	303670	Tacloban City NHS	-	138	-	6	COMPLETELY DELIVERED	✓	✓	
Tacloban City	314004	Northern Tacloban City NHS	-	184	-	8	COMPLETELY DELIVERED	✓	✓	
Tacloban City	314004	Northern Tacloban City NHS	-	276	-	12	COMPLETELY DELIVERED	✓	✓	
Tacloban City	314005	Scandinavian NHS	-	184	-	8	COMPLETELY DELIVERED	✓	✓	
Tacloban City	344881	Tacloban City Stand Alone 1 Senior High School	-	184	-	8	COMPLETELY DELIVERED			
Tacloban City	344882	V&G NHS	-	184	-	8	COMPLETELY DELIVERED	✓	✓	
Tacloban City	344882	V&G NHS	-	138	-	6	COMPLETELY DELIVERED	✓	✓	
Tacloban City	500489	Ridge View Park Integrated School	-	276	-	12	COMPLETELY DELIVERED	✓	✓	

## CY 2018 SOUTHERN LEYTE CLUSTER 2-LOT 7

Division	School ID	School Name	ELEM. 2- SEATER TABLE & CHAIRS SET (23 SET/CL)	JHS 2-SEATER TABLE & CHAIRS SET (23 SET/CL)	SHS 2-SEATER TABLE & CHAIRS SET (20 SET/CL)	TEACHER S' TABLE & CHAIR SET	STATUS OF DELIVERY	WITH PICTURE	WITH AFFIDAVIT	REMARKS
Southern Leyte	303481	San Juan NHS	-	138	-	6	COMPLETELY DELIVERED	✓	✓	
Southern Leyte	303483	San Ricardo NHS	-	184	-	8	COMPLETELY DELIVERED	✓	✓	
Southern Leyte	303483	San Ricardo NHS	-	138	-	6	COMPLETELY DELIVERED	✓	✓	
Southern Leyte	303486	Silago NVHS	-	184	-	8	COMPLETELY DELIVERED			
Southern Leyte	303486	Silago NVHS	-	138	-	6	COMPLETELY DELIVERED			
Southern Leyte	303487	Sogod NHS	-	276	-	12	COMPLETELY DELIVERED	✓	✓	
Southern Leyte	303487	Sogod NHS	-	184	-	8	COMPLETELY DELIVERED	✓	✓	
Southern Leyte	303488	Sta. Cruz NHS	-	276	-	12	COMPLETELY DELIVERED			
Southern Leyte	303488	Sta. Cruz NHS	-	138	-	6	COMPLETELY DELIVERED			
Southern Leyte	303489	Sta. Paz NHS	-	184	-	8	COMPLETELY DELIVERED	✓	✓	
Southern Leyte	303489	Sta. Paz NHS	-	184	-	8	COMPLETELY DELIVERED	✓	✓	
Southern Leyte	303492	VILLA JACINTA NVHS	-	276	-	12	COMPLETELY DELIVERED	✓	✓	
Southern Leyte	303492	VILLA JACINTA NVHS	-	276	-	12	COMPLETELY DELIVERED	✓	✓	
Southern Leyte	313403	Bontoc NHS	-	184	-	8	COMPLETELY DELIVERED	✓	✓	
Southern Leyte	313403	Bontoc NHS	-	184	-	8	COMPLETELY DELIVERED	✓	✓	
Southern Leyte	313403	Bontoc NHS	-	92	-	4	COMPLETELY DELIVERED	✓	✓	
Southern Leyte	313409	Liloan National Technical Vocational High School	-	184	-	8	COMPLETELY DELIVERED	✓	✓	
Southern Leyte	313409	Liloan National Technical Vocational High School	-	184	-	8	COMPLETELY DELIVERED	✓	✓	
Southern Leyte	313411	Libagon NHS	-	138	-	6	COMPLETELY DELIVERED			

**CY 2018 MAASIN & SOUTHERN LEYTE CLUSTER 2-LOT 6**

Division	School ID	School Name	ELEM. 2-SEATER TABLE & CHAIRS SET (23 SET/CL)	JHS 2-SEATER TABLE & CHAIRS SET (23 SET/CL)	SHS 2-SEATER TABLE & CHAIRS SET (20 SET/CL)	TEACHERS TABLE & CHAIR SET	STATUS OF DELIVERY	WITH PICTURE	WITH AFFIDAVIT	REMARKS
Maasin City	303454	Dongon NHS	-	276	-	12	COMPLETELY DELIVERED	✓	✓	
	303454	Dongon NHS	-	92	-	4	COMPLETELY DELIVERED			
Maasin City	303464	Libhu NHS	-	184	-	8	COMPLETELY DELIVERED	✓	✓	
Maasin City	303469	Manhilo NHS	-	184	-	8	COMPLETELY DELIVERED	✓	✓	
Maasin City	313401	Maasin City NHS	-	184	-	8	COMPLETELY DELIVERED	✓	✓	
Maasin City	323101	Ibarra NHS	-	184	-	8	COMPLETELY DELIVERED	✓	✓	
Maasin City	323103	Lunas NHS	-	92	-	4	COMPLETELY DELIVERED	✓	✓	
	323103	Lunas NHS	-	92	-	4	COMPLETELY DELIVERED			
Maasin City	323105	Asuncion Integrated School	-	92	- +	4	COMPLETELY DELIVERED	✓	✓	
Maasin City	323106	Matin-aw NHS	-	138	-	6	COMPLETELY DELIVERED	✓	✓	
	323106	Matin-aw NHS	-	92	-	4	COMPLETELY DELIVERED			
Maasin City	344781	Stand Alone SHS within San Rafael ES	-	-	240	12	COMPLETELY DELIVERED	✓	✓	
	344781	Stand Alone SHS within San Rafael ES	-	-	120	6	COMPLETELY DELIVERED			
Southern Leyte	303461	Hingatungan NHS	-	184	-	8	COMPLETELY DELIVERED	✓	✓	
	303461	Hingatungan NHS	-	138	-	6	COMPLETELY DELIVERED			
Southern Leyte	303462	Ichon Integrated Senior High School	-	276	-	12	COMPLETELY DELIVERED	✓	✓	
Southern Leyte	303465	LIMASAWA NHS	-	276	-	12	COMPLETELY DELIVERED			
	303465	LIMASAWA NATIONAL HIGH SCHOOL	-	46	-	2	COMPLETELY DELIVERED			
Southern Leyte	303466	Lungsodaan NHS	-	184	-	8	COMPLETELY DELIVERED	✓	✓	
	303466	Lungsodaan NHS	-	184	-	8	COMPLETELY DELIVERED			
Southern Leyte	303472	Rito Monte de Ramos Sr. MHS (Nahaong NHS)	-	184	-	8	COMPLETELY DELIVERED	✓	✓	
	303472	Rito Monte de Ramos Sr. MHS (Nahaong NHS)	-	184	-	8	COMPLETELY DELIVERED			
Southern Leyte	303475	Paku NHS	-	230	-	10	COMPLETELY DELIVERED	✓	✓	
Southern Leyte	303476	Pintuyan NHS	-	138	-	6	COMPLETELY DELIVERED			
Southern Leyte	303477	Pintuyan NVHS	-	276	-	12	COMPLETELY DELIVERED			
	303477	Pintuyan NVHS	-	276	-	12	COMPLETELY DELIVERED			
Southern Leyte	303481	San Juan NHS	-	276	-	12	COMPLETELY DELIVERED	✓	✓	

**CY 2017 SAMAR DIVISION BATCH 3-LOT 1**

NO	SCHOOL ID	SCHOOL NAME	FURNITURE PACKAGE FOR KINDER	ES / JHS ARMCHAIR (45/CL)	ES / JHS TTC (SET)	STATUS OF DELIVERY	WITH PICTURE	WITH AFFIDAVIT	REMARKS
1	123285	Almagro CS	-	90	2	COMPLETELY DELIVERED			
2	123286	Bacjao ES	-	90	2	COMPLETELY DELIVERED			
3	123287	Biasong Elementary School	-	90	2	COMPLETELY DELIVERED			
4	123288	COSTA RICA ELEM.SCHOOL	-	90	2	COMPLETELY DELIVERED			
5	123289	Guin-Ansan ES	-	90	2	COMPLETELY DELIVERED			
6	123290	Imelda ES	-	90	2	COMPLETELY DELIVERED			
7	123291	Kerikiti ES	-	90	2	COMPLETELY DELIVERED			
8	123292	Lunang I ES	-	90	2	COMPLETELY DELIVERED			
9	123293	Lunang II ES	-	90	2	COMPLETELY DELIVERED			
10	123294	Magsaysay PS	-	90	2	COMPLETELY DELIVERED			
11	123295	Malobago ES	-	90	2	COMPLETELY DELIVERED	✓		
12	123296	Marasbaras PS	-	90	2	COMPLETELY DELIVERED			
13	123297	San Isidro PS	-	90	2	COMPLETELY DELIVERED			
14	123298	Talahid ES	-	90	2	COMPLETELY DELIVERED			
15	123299	Tonga-Tonga PS	-	90	2	COMPLETELY DELIVERED	✓		
16	123497	Balocawe PS	-	90	2	COMPLETELY DELIVERED			
17	123498	Beslig ES	-	90	2	COMPLETELY DELIVERED			
18	123499	Buao ES	-	90	2	COMPLETELY DELIVERED			
19	123500	Bunyagan ES	-	90	2	COMPLETELY DELIVERED			
20	123502	Caparangasan Elementary School	-	90	2	COMPLETELY DELIVERED			
21	123504	Carmona ES	-	90	2	COMPLETELY DELIVERED			

Department of Education Regional Office VIII (Eastern Visayas)

NO	SCHOOL ID	SCHOOL NAME	FURNITURE PACKAGE FOR KINDER	ES / JHS ARMCHAIR (45/CL)	ES / JHS TTC (SET)	STATUS OF DELIVERY	WITH PICTURE	WITH AFFIDAVIT	REMARKS
22	123505	Casab-Ahan ES	-	90	2	COMPLETELY DELIVERED			
23	123506	Caugbusan ES	-	90	2	COMPLETELY DELIVERED			
24	123507	Concepcion ES	-	90	2	COMPLETELY DELIVERED			
25	123508	El Cano ES	-	90	2	COMPLETELY DELIVERED			
26	123509	Gandara I CS	-	90	2	COMPLETELY DELIVERED			
27	123510	Giaboc PS	-	90	2	COMPLETELY DELIVERED			
28	123512	Hinayagan ES	-	90	2	COMPLETELY DELIVERED			
29	123513	Jasminez PS	-	90	2	COMPLETELY DELIVERED			
30	123514	Lungib ES	-	90	2	COMPLETELY DELIVERED			
31	123515	Macugo ES	-	90	2	COMPLETELY DELIVERED			
32	123516	Nacube Elementary School	-	90	2	COMPLETELY DELIVERED			
33	123517	Nalihugan ES	-	90	2	COMPLETELY DELIVERED			
34	123518	Napalisan Elementary School	-	90	2	COMPLETELY DELIVERED			
35	123519	Natimonan ES	-	90	2	COMPLETELY DELIVERED			
36	123520	Palanas ES	-	90	2	COMPLETELY DELIVERED			
37	123521	Purog ES	-	90	2	COMPLETELY DELIVERED			
38	123522	Rawis ES	-	90	2	COMPLETELY DELIVERED			
39	123523	Samoyao Elementary School	-	90	2	COMPLETELY DELIVERED			
40	123524	San Antonio ES	-	90	2	COMPLETELY DELIVERED			
41	123526	San Francisco PS	-	90	2	COMPLETELY DELIVERED			

Department of Education Regional Office VIII (Eastern Visayas)

NO	SCHOOL ID	SCHOOL NAME	FURNITURE PACKAGE FOR KINDER	ES / JHS ARMCHAIR (45/CL)	ES / JHS TTC (SET)	STATUS OF DELIVERY	WITH PICTURE	WITH AFFIDAVIT	REMARKS
42	123527	San Isidro ES	-	90	2	COMPLETELY DELIVERED			
43	123528	Sidmon ES	-	90	2	COMPLETELY DELIVERED			
44	123529	Sta. Elena ES	-	90	2	COMPLETELY DELIVERED			
45	123530	Tagna ES	-	90	2	COMPLETELY DELIVERED			
46	123531	Tambongan ES	-	90	2	COMPLETELY DELIVERED			
47	123534	Bangahon ES	-	90	2	COMPLETELY DELIVERED			
48	123535	Barruz ES	-	90	2	COMPLETELY DELIVERED			
49	123536	CALIROCAN ELEMENTARY SCHOOL	-	90	2	COMPLETELY DELIVERED			
50	123537	Canhumawid ES	-	90	2	COMPLETELY DELIVERED			
51	123538	Casandig ES	-	90	2	COMPLETELY DELIVERED			
52	123539	Catorse De Agosto ES	-	90	2	COMPLETELY DELIVERED			
53	123540	De-It ES	-	90	2	COMPLETELY DELIVERED			
54	123541	Diaz ES	-	90	2	COMPLETELY DELIVERED			
55	123542	Gandara II CS	-	90	2	COMPLETELY DELIVERED			
56	123543	Gerali ES	-	90	2	COMPLETELY DELIVERED			
57	123544	Hampton Integrated School	-	90	2	COMPLETELY DELIVERED			
58	123545	Hinogacan ES	-	90	2	COMPLETELY DELIVERED			
59	123546	Mabuhay ES	-	90	2	COMPLETELY DELIVERED			
60	123547	Mahanud PS	-	90	2	COMPLETELY DELIVERED			
61	123548	Marcos ES	-	90	2	COMPLETELY DELIVERED			



Department of Education Regional Office VIII (Eastern Visayas)

NO	SCHOOL ID	SCHOOL NAME	FURNITURE PACKAGE FOR KINDER	ES / JHS ARMCHAIR (45/CL)	ES / JHS TTC (SET)	STATUS OF DELIVERY	WITH PICTURE	WITH AFFIDAVIT	REMARKS
62	123549	Matuguinao CES	-	90	2	COMPLETELY DELIVERED	✓		
63	123550	Nagpapacao ES	-	90	2	COMPLETELY DELIVERED			
64	123551	Palambrag ES	-	90	2	COMPLETELY DELIVERED			
65	123552	Piñaplata I.S.	-	90	2	COMPLETELY DELIVERED			
66	123553	Pizarro ES	-	90	2	COMPLETELY DELIVERED			
67	123554	Pologon Elementary School	-	90	2	COMPLETELY DELIVERED			
68	123555	Rizal 1 Elementary School	-	90	2	COMPLETELY DELIVERED			
69	123556	San Agustin ES	-	90	2	COMPLETELY DELIVERED			
70	123557	San Isidro ES	-	90	2	COMPLETELY DELIVERED	✓		
71	123558	San Jose ES	-	90	2	COMPLETELY DELIVERED			
72	123559	San Miguel ES	-	90	2	COMPLETELY DELIVERED			
73	123560	San Pelayo ES	-	90	2	COMPLETELY DELIVERED			
74	123562	Sto. Nino ES	-	90	2	COMPLETELY DELIVERED			
75	123563	Tawiran ES	-	90	2	COMPLETELY DELIVERED			
76	123564	Villaleona Elementary School	-	90	2	COMPLETELY DELIVERED			
77	123650	Bangon Elementary School	-	90	2	COMPLETELY DELIVERED			
78	123651	Buenos Aires Integrated School	-	90	2	COMPLETELY DELIVERED	✓		
79	123652	Calanyugan ES	-	90	2	COMPLETELY DELIVERED			

Department of Education Regional Office VIII (Eastern Visayas)

NO	SCHOOL ID	SCHOOL NAME	FURNITURE PACKAGE FOR KINDER	ES / JHS ARMCHAIR (45/CL)	ES / JHS TTC (SET)	STATUS OF DELIVERY	WITH PICTURE	WITH AFFIDAVIT	REMARKS
80	123653	Caloloma ES	-	90	2	COMPLETELY DELIVERED			
81	123654	Cambaye Elementary School	-	90	2	COMPLETELY DELIVERED			
82	123655	Pagsanghan Central Elementary School	-	90	2	COMPLETELY DELIVERED			
83	123656	PANGE ES	-	90	2	COMPLETELY DELIVERED			
84	123657	San Luis ES	-	90	2	COMPLETELY DELIVERED	✓		
85	123658	Villahermosa ES	-	90	2	COMPLETELY DELIVERED			
86	123682	Aurora ES	-	90	2	COMPLETELY DELIVERED			
87	123683	Blanca-Aurora ES	-	90	2	COMPLETELY DELIVERED			
88	123684	Buenavista ES	-	90	2	COMPLETELY DELIVERED	✓		
89	123685	Bulao ES	-	90	2	COMPLETELY DELIVERED			
90	123686	Bungliw ES	-	90	2	COMPLETELY DELIVERED			
91	123687	Cag-Olo-Olo ES	-	90	2	COMPLETELY DELIVERED			
92	123688	Cagtoto-Og ES	-	90	2	COMPLETELY DELIVERED			
93	123689	Calundan ES	-	90	2	COMPLETELY DELIVERED			
94	123690	Cantaguic ES	-	90	2	COMPLETELY DELIVERED			
95	123691	Erenas Elementary School	-	90	2	COMPLETELY DELIVERED			
96	123692	Gayondato ES	-	90	2	COMPLETELY DELIVERED			
97	123693	Guadalupe ES	-	90	2	COMPLETELY DELIVERED			
98	123694	Hernandez ES	-	90	2	COMPLETELY DELIVERED			

Department of Education Regional Office VIII (Eastern Visayas)

NO	SCHOOL ID	SCHOOL NAME	FURNITURE PACKAGE FOR KINDER	ES / JHS ARMCHAIR (45/CL)	ES / JHS TTC (SET)	STATUS OF DELIVERY	WITH PICTURE	WITH AFFIDAVIT	REMARKS
99	123695	Himay PS	-	90	2	COMPLETELY DELIVERED			
100	123697	La Paz ES	-	90	2	COMPLETELY DELIVERED			
101	123698	Libertad ES	-	90	2	COMPLETELY DELIVERED			
102	123699	Lincoro ES	-	90	2	COMPLETELY DELIVERED			
103	123700	Mabuhay ES	-	90	2	COMPLETELY DELIVERED			
104	123701	Matalud ES	-	90	2	COMPLETELY DELIVERED			
105	123702	Mobo-Ob ES	-	90	2	COMPLETELY DELIVERED			
106	123704	Quezon ES	-	90	2	COMPLETELY DELIVERED			
107	123705	Ranera ES	-	90	2	COMPLETELY DELIVERED			
108	123706	Rosalim ES	-	90	2	COMPLETELY DELIVERED			
109	123707	San Isidro ES	-	90	2	COMPLETELY DELIVERED			
110	123708	San Jorge CS	-	90	2	COMPLETELY DELIVERED			
111	123709	Sapinit ES	-	90	2	COMPLETELY DELIVERED			
112	123710	Sinit-An ES	-	90	2	COMPLETELY DELIVERED			
113	123711	Tomogbong ES	-	90	2	COMPLETELY DELIVERED			
114	123722	ARAPISON ES	-	90	2	COMPLETELY DELIVERED			
115	123723	BAHAY ES	-	90	2	COMPLETELY DELIVERED			
116	123724	Burabod ES	-	90	2	COMPLETELY DELIVERED	✓		
117	123725	Cagsumje ES	-	90	2	COMPLETELY DELIVERED			
118	123726	CANIPULAN ES	-	90	2	COMPLETELY DELIVERED			
119	123727	CINCO ES	-	90	2	COMPLETELY DELIVERED			
120	123730	Lambao ES	-	90	2	COMPLETELY DELIVERED			

Department of Education Regional Office VIII (Eastern Visayas)

NO	SCHOOL ID	SCHOOL NAME	FURNITURE PACKAGE FOR KINDER	ES / JHS ARMCHAIR (45/CL)	ES / JHS TTC (SET)	STATUS OF DELIVERY	WITH PICTURE	WITH AFFIDAVIT	REMARKS
121	123731	Mabuhay ES	-	90	2	COMPLETELY DELIVERED			
122	123732	Mahayag ES	-	90	2	COMPLETELY DELIVERED			
123	123733	Matayonas ES	-	90	2	COMPLETELY DELIVERED			
124	123734	Panaru-an ES	-	90	2	COMPLETELY DELIVERED			
125	123736	Salvacion ES	-	90	2	COMPLETELY DELIVERED			
126	123737	Solsogon ES	-	90	2	COMPLETELY DELIVERED			
127	123738	Sta. Margarita I CS	-	90	2	COMPLETELY DELIVERED	✓		
128	123739	Sundara ES	-	90	2	COMPLETELY DELIVERED			
129	123740	Agrupacion ES	-	90	2	COMPLETELY DELIVERED			
130	123741	Avelino ES	-	90	2	COMPLETELY DELIVERED	✓	✓	
131	123742	Balud ES	-	90	2	COMPLETELY DELIVERED	✓	✓	
132	123743	Bana-ao ES	-	90	2	COMPLETELY DELIVERED	✓	✓	
133	123745	Camperito ES	-	90	2	COMPLETELY DELIVERED	✓	✓	
134	123746	Canmoros ES	-	90	2	COMPLETELY DELIVERED	✓	✓	
135	123747	Curry ES	-	90	2	COMPLETELY DELIVERED	✓	✓	
136	123749	Ilo ES	-	90	2	COMPLETELY DELIVERED	✓	✓	
137	123750	Inoraguiao ES	-	90	2	COMPLETELY DELIVERED	✓	✓	
138	123751	Jolacao ES	-	90	2	COMPLETELY DELIVERED			
139	123752	Nabulo Elem. School	-	90	2	COMPLETELY DELIVERED	✓	✓	
140	123753	Palale ES	-	90	2	COMPLETELY DELIVERED	✓	✓	

Department of Education Regional Office VIII (Eastern Visayas)

NO	SCHOOL ID	SCHOOL NAME	FURNITURE PACKAGE FOR KINDER	ES / JHS ARMCHAIR (45/CL)	ES / JHS TTC (SET)	STATUS OF DELIVERY	WITH PICTURE	WITH AFFIDAVIT	REMARKS
141	123754	Panabatan ES	-	90	2	COMPLETELY DELIVERED	✓	✓	
142	123755	Sta. Margarita II CES	-	90	2	COMPLETELY DELIVERED	✓	✓	
143	123802	Balatguti ES	-	90	2	COMPLETELY DELIVERED	✓		
145	123803	Baras ES	-	90	2	COMPLETELY DELIVERED	✓		
146	123804	Buenavista ES	-	90	2	COMPLETELY DELIVERED	✓		
147	123805	Cabunga-an IS	-	90	2	COMPLETELY DELIVERED			
148	123806	Corocawayan ES	-	90	2	COMPLETELY DELIVERED			
149	123807	Ilijan ES	-	90	2	COMPLETELY DELIVERED	✓	✓	
150	123808	Lobe-Lobe ES	-	90	2	COMPLETELY DELIVERED	✓		
151	123809	Malobago PS	-	90	2	COMPLETELY DELIVERED	✓		
152	123810	Pinanangnan ES	-	90	2	COMPLETELY DELIVERED	✓		
153	123811	Sevilla ES	-	90	2	COMPLETELY DELIVERED			
154	123812	Sto. Nino CS	-	90	2	COMPLETELY DELIVERED	✓		
155	123813	Takut ES	-	90	2	COMPLETELY DELIVERED			
156	123814	Villahermosa ES	-	90	2	COMPLETELY DELIVERED			
157	123815	Balocawe ES	-	90	2	COMPLETELY DELIVERED			
158	123816	Baquiw ES	-	90	2	COMPLETELY DELIVERED			
159	123818	Guinbarocan ES	-	90	2	COMPLETELY DELIVERED			
160	123819	Labangbaybay ES	-	90	2	COMPLETELY DELIVERED			
160	123820	Luna ES	-	90	2	COMPLETELY DELIVERED			

Department of Education Regional Office VIII (Eastern Visayas)

NO	SCHOOL ID	SCHOOL NAME	FURNITURE PACKAGE FOR KINDER	ES / JHS ARMCHAIR (45/CL)	ES / JHS TTC (SET)	STATUS OF DELIVERY	WITH PICTURE	WITH AFFIDAVIT	REMARKS
161	123821	Manlangit ES	-	90	2	COMPLETELY DELIVERED			
162	123822	Mataluto ES	-	90	2	COMPLETELY DELIVERED			
163	123823	Nipa ES	-	90	2	COMPLETELY DELIVERED			
164	123825	PolangBato ES	-	90	2	COMPLETELY DELIVERED			
165	123826	San Vicente ES	-	90	2	COMPLETELY DELIVERED			
166	123827	Tagapul-an CS	-	90	2	COMPLETELY DELIVERED			
167	123828	Trinidad ES	-	90	2	COMPLETELY DELIVERED			
168	123829	Alcazar ES	-	90	2	COMPLETELY DELIVERED			
169	123831	Bahay ES	-	90	2	COMPLETELY DELIVERED			
170	123832	Balonga-As ES	-	90	2	COMPLETELY DELIVERED	✓		
171	123833	Balugo ES	-	90	2	COMPLETELY DELIVERED			
172	123834	Baras ES	-	90	2	COMPLETELY DELIVERED			
173	123835	Binalayan ES	-	90	2	COMPLETELY DELIVERED	✓	✓	
174	123836	BISITAHAN ES	-	90	2	COMPLETELY DELIVERED		✓	
175	123837	Bonga ES	-	90	2	COMPLETELY DELIVERED	✓	✓	
176	123838	Cabunga-An ES	-	90	2	COMPLETELY DELIVERED			
177	123839	Cagtutulo ES	-	90	2	COMPLETELY DELIVERED			
178	123840	Cambatutay Nuevo ES	-	90	2	COMPLETELY DELIVERED			
179	123841	Cambatutay Viejo ES	-	90	2	COMPLETELY DELIVERED			

Department of Education Regional Office VIII (Eastern Visayas)

NO	SCHOOL ID	SCHOOL NAME	FURNITURE PACKAGE FOR KINDER	ES / JHS ARMCHAIR (45/CL)	ES / JHS TTC (SET)	STATUS OF DELIVERY	WITH PICTURE	WITH AFFIDAVIT	REMARKS
180	123842	Canunghan ES	-	90	2	COMPLETELY DELIVERED	✓	✓	
181	123844	Dapdap ES	-	90	2	COMPLETELY DELIVERED	✓	✓	
182	123845	Gallego ES	-	90	2	COMPLETELY DELIVERED	✓	✓	
183	123846	Lahong ES	-	90	2	COMPLETELY DELIVERED	✓		
184	123847	LibucanDacu ES	-	90	2	COMPLETELY DELIVERED	✓	✓	
185	123848	LibucanGote ES	-	90	2	COMPLETELY DELIVERED	✓	✓	
186	123849	Lucerdoni ES	-	90	2	COMPLETELY DELIVERED	✓	✓	
187	123850	Majacob IS	-	90	2	COMPLETELY DELIVERED	✓		
188	123851	Mancares ES	-	90	2	COMPLETELY DELIVERED	✓	✓	
189	123853	Oeste ES	-	90	2	COMPLETELY DELIVERED	✓		
190	123855	Palencia ES	-	90	2	COMPLETELY DELIVERED	✓	✓	
191	123856	San Vicente ES	-	90	2	COMPLETELY DELIVERED			
192	123857	Sta. Cruz ES	-	90	2	COMPLETELY DELIVERED	✓	✓	
193	123858	Sto.Nino ES	-	90	2	COMPLETELY DELIVERED	✓	✓	
194	123859	Sugod ES	-	90	2	COMPLETELY DELIVERED	✓	✓	
195	123860	Talinga ES	-	90	2	COMPLETELY DELIVERED			
196	123861	Tarangnan CES	-	90	2	COMPLETELY DELIVERED	✓		
197	123862	Tigdaranao ES	-	90	2	COMPLETELY DELIVERED	✓		
198	123863	Tizon ES	-	90	2	COMPLETELY DELIVERED	✓		
199	193502	Del Rosario PS	-	90	2	COMPLETELY DELIVERED			
200	193503	Libertad PS	-	90	2	COMPLETELY DELIVERED			

Department of Education Regional Office VIII (Eastern Visayas)

NO	SCHOOL ID	SCHOOL NAME	FURNITURE PACKAGE FOR KINDER	ES / JHS ARMCHAIR (45/CL)	ES / JHS TTC (SET)	STATUS OF DELIVERY	WITH PICTURE	WITH AFFIDAVIT	REMARKS
201	193504	Rizal PS 2	-	90	2	COMPLETELY DELIVERED			
202	193506	Cabugao ES	-	90	2	COMPLETELY DELIVERED			
203	193508	Mombon ES	-	90	2	COMPLETELY DELIVERED			
204	193509	Rawis ES	-	90	2	COMPLETELY DELIVERED	✓		
205	303599	Clarence Calagos Mem SOF	-	180	4	COMPLETELY DELIVERED			
206	303600	Costa Rica NHS	-	90	2	COMPLETELY DELIVERED			
207	303612	Matuguinao NHS	-	90	2	COMPLETELY DELIVERED			
208	303615	Pagsanghan NHS	-	90	2	COMPLETELY DELIVERED			
209	303618	Ramon T. Diaz NHS	-	225	5	COMPLETELY DELIVERED			
210	303619	Buenavista SHS	-	90	2	COMPLETELY DELIVERED			
211	303629	Sta. Margarita NHS	-	90	2	COMPLETELY DELIVERED			
212	303634	Tarangnan NHS	-	135	3	COMPLETELY DELIVERED			
213	303635	OESTE NHS	-	90	2	COMPLETELY DELIVERED	✓		
214	313708	San Jorge NHS	-	90	2	COMPLETELY DELIVERED			
215	313722	Majacob IS	-	90	2	COMPLETELY DELIVERED			
216	123300	Agimit ES	-	90	2	COMPLETELY DELIVERED			
217	123301	Bagong Silang ES	-	90	2	COMPLETELY DELIVERED			
218	123302	Bagti ES	-	90	2	COMPLETELY DELIVERED			
219	123303	Balante ES	-	90	2	COMPLETELY DELIVERED			
220	123304	Baloog ES	-	90	2	COMPLETELY DELIVERED			



Department of Education Regional Office VIII (Eastern Visayas)

NO	SCHOOL ID	SCHOOL NAME	FURNITURE PACKAGE FOR KINDER	ES / JHS ARMCHAIR (45/CL)	ES / JHS TTC (SET)	STATUS OF DELIVERY	WITH PICTURE	WITH AFFIDAVIT	REMARKS
221	123305	Balud ES (Nouvelas Occ. ES)	-	90	2	COMPLETELY DELIVERED			
222	123306	Bangon ES	-	90	2	COMPLETELY DELIVERED			
223	123307	Basey I CES	-	225	5	COMPLETELY DELIVERED			
224	123308	BASIAO ES	-	90	2	COMPLETELY DELIVERED			
225	123309	Biga ES	-	90	2	COMPLETELY DELIVERED			
226	123310	Binugho ES	-	90	2	COMPLETELY DELIVERED			
227	123311	Burabod ES	-	90	2	COMPLETELY DELIVERED			
228	123312	Burgos ES	-	90	2	COMPLETELY DELIVERED			
229	123313	Catadman ES	-	90	2	COMPLETELY DELIVERED			
230	123314	Del Pilar ES	-	90	2	COMPLETELY DELIVERED			
231	123315	Guirang ES	-	90	2	COMPLETELY DELIVERED			
232	123316	Inuntan ES	-	90	2	COMPLETELY DELIVERED			
233	123317	Loog ES	-	90	2	COMPLETELY DELIVERED			
234	123318	Mabini ES	-	90	2	COMPLETELY DELIVERED			
235	123320	Panugmonon ES	-	90	2	COMPLETELY DELIVERED			
236	123321	Pelit ES	-	90	2	COMPLETELY DELIVERED			
237	123322	Rawis ES	-	90	2	COMPLETELY DELIVERED			
238	123323	Salvacion ES	-	90	2	COMPLETELY DELIVERED			
239	123324	SAN FERNANDO ELEMENTARY	-	90	2	COMPLETELY DELIVERED			
240	123325	Serum ES	-	90	2	COMPLETELY DELIVERED			
241	123326	Sugponon ES	-	90	2	COMPLETELY DELIVERED			

Department of Education Regional Office VIII (Eastern Visayas)

NO	SCHOOL ID	SCHOOL NAME	FURNITURE PACKAGE FOR KINDER	ES / JHS ARMCHAIR (45/CL)	ES / JHS TTC (SET)	STATUS OF DELIVERY	WITH PICTURE	WITH AFFIDAVIT	REMARKS
242	123327	Villa Aurora ES	-	90	2	COMPLETELY DELIVERED			
243	123328	Amandayehan ES	-	90	2	COMPLETELY DELIVERED			
244	123329	Anglit ES	-	90	2	COMPLETELY DELIVERED			
245	123330	Bacubac ES	-	90	2	COMPLETELY DELIVERED	✓		
246	123331	Basey II CS	-	90	2	COMPLETELY DELIVERED			
247	123332	Buenavista ES	-	90	2	COMPLETELY DELIVERED			
248	123333	Bulao ES	-	90	2	COMPLETELY DELIVERED			
249	123334	Calbang ES	-	90	2	COMPLETELY DELIVERED			
250	123335	Cambayan ES	-	90	2	COMPLETELY DELIVERED			
251	123336	Can-Abay ES	-	90	2	COMPLETELY DELIVERED			
252	123337	Cancaiyas ES	-	90	2	COMPLETELY DELIVERED	✓		
253	123338	Cogon ES	-	90	2	COMPLETELY DELIVERED			
254	123339	Dolongan ES	-	90	2	COMPLETELY DELIVERED	✓		
255	123340	Guintigi-an ES	-	90	2	COMPLETELY DELIVERED	✓		
256	123341	Iba ES	-	90	2	COMPLETELY DELIVERED			
257	123342	Lubang ES	-	90	2	COMPLETELY DELIVERED			
258	123343	Magallanes ES	-	90	2	COMPLETELY DELIVERED			
259	123344	Manila-Ay ES	-	90	2	COMPLETELY DELIVERED			
260	123345	May-it ES	-	90	2	COMPLETELY DELIVERED			
261	123346	Mongabong ES	-	90	2	COMPLETELY DELIVERED			
262	123347	New San Agustin ES	-	90	2	COMPLETELY DELIVERED			

## CY 2017 LEYTE BATCH 2-LOT 2

DIVISION	SCHOOL ID	SCHOOL NAME	TOTAL NO. OF SITES	FURNITURE PACKAGE FOR KINDER	SCIENCE LABORATORY TABLE & STOOLS (7 SET PER CL)	WORKING TABLE & STOOLS (7 SET PER CL)	STATUS OF DELIVERY	WITH PICTURE	WITH AFFIDAVIT	REMARKS
Leyte	121321	Calipayan Elementary School	1	1	-	-	COMPLETELY DELIVERED			
Leyte	121323	Camitoc Elementary	1	1	-	-	COMPLETELY DELIVERED			
Leyte	121456	Buenavista Elementary School	1	1	-	-	COMPLETELY DELIVERED			
Leyte	121702	Calipayan Elementary School	1	1	-	-	COMPLETELY DELIVERED			
Leyte	121959	Banawang Elementary School	1	1	-	-	COMPLETELY DELIVERED			
Leyte	121960	Balire Elementary School	1	1	-	-	COMPLETELY DELIVERED			
Leyte	303345	Balugo National High School	1	-	-	7	COMPLETELY DELIVERED			
Leyte	303366	Damulaan National High School	1	-	-	7	COMPLETELY DELIVERED			
Leyte	303368	Dr. Geronimo B. Zaldivar Memorial School of Fisheries	1	-	-	7	COMPLETELY DELIVERED			
Leyte	303378	Isabel National High School	1	-	-	7	COMPLETELY DELIVERED			
Leyte	303383	Kananga National High School - Main	1	-	-	7	COMPLETELY DELIVERED			
Leyte	303395	Lim-ao National High School		-	-	7	COMPLETELY DELIVERED			
Leyte	303396	Lomonon National High School	1	-	-	7	COMPLETELY DELIVERED			
Leyte	303404	Matag-ob National High School	1	-	-	7	COMPLETELY DELIVERED			
Leyte	303406	Matlang NHS	1	-	-	7	COMPLETELY DELIVERED			
Leyte	303409	Merida Vocational School - Calunangan Annex	1	-	-	7	COMPLETELY DELIVERED			
Leyte	303410	Puerto Bello National High School	1	-	-	7	COMPLETELY DELIVERED			

Leyte	303422	San Francisco National High School	1	-	-	7	COMPLETELY DELIVERED			
Leyte	303435	Taberna National High School	1	-	-	7	COMPLETELY DELIVERED			
Leyte	303438	Tinabilan National High School	1	-	-	7	COMPLETELY DELIVERED			
Leyte	313306	Palompon National High School	1	-	-	7	COMPLETELY DELIVERED			
Leyte	313327	Rizal National High School	1	-	-	7	COMPLETELY DELIVERED			
Leyte	313334	Putingbato, Cangag, Canandan, Consolacion St. Filomena National High School		-	-	7	COMPLETELY DELIVERED	✓		
Ormoc City	124187	Nueva Vista Elementary School	1	1	-	-	COMPLETELY DELIVERED	✓	✓	
Ormoc City	303654	Dolores National High School	1	-	-	7	COMPLETELY DELIVERED	✓	✓	
Ormoc City	303655	Ipil National High School	1	-	-	7	COMPLETELY DELIVERED	✓	✓	
Ormoc City	303657	Margen National High School	1	-	-	7	COMPLETELY DELIVERED	✓	✓	
Ormoc City	303660	Rustico Capahí Sr. Memorial National High School	1	-	-	7	COMPLETELY DELIVERED	✓	✓	
Ormoc City	303661	Genaro B. Lure-Atana National High School	1	-	-	7	COMPLETELY DELIVERED	✓	✓	
Ormoc City	303662	Valencia National High School	1	-	-	7	COMPLETELY DELIVERED	✓	✓	
Ormoc City	313901	Lilo-an National High School	1	-	-	7	COMPLETELY DELIVERED	✓	✓	
Ormoc City	313902	Pedro G. Bañez National High School		-	-	7	COMPLETELY DELIVERED	✓	✓	
Ormoc City	313904	Matica-a National High School	1	-	-	7	COMPLETELY DELIVERED	✓	✓	
Ormoc City	313906	Julian C. Gantuangco NHS	1	-	-	7	COMPLETELY DELIVERED	✓	✓	

Ormoc City	330523	Ormoc City Senior High School	1	-	-	7	COMPLETELY DELIVERED	✓	✓	
Southern Leyte	122115	Sudmon Elementary School	1	1	-	-	COMPLETELY DELIVERED	✓		
Southern Leyte	122225	San Agustin Elementary School	1	1	-	-	COMPLETELY DELIVERED			
Southern Leyte	122230	Triana Elementary School	1	1	-	-	COMPLETELY DELIVERED			
Southern Leyte	122291	Hindag-An ES	1	1	-	-	COMPLETELY DELIVERED			
Tacloban City	303663	Leyte NHS	1	-	-	7	COMPLETELY DELIVERED	✓	✓	
Tacloban City	303669	Tacloban National Agricultural School	1	-	-	7	COMPLETELY DELIVERED	✓	✓	
Tacloban City	314003	Antonio Balmes NHS	1	-	14	7	COMPLETELY DELIVERED	✓	✓	
Tacloban City	314004	Northern Tacloban City NHS	1	-	-	7	COMPLETELY DELIVERED	✓	✓	
Tacloban City	344882	V&G NHS	1	-	-	7	COMPLETELY DELIVERED	✓	✓	

**CY 2017 EASTERN SAMAR, NORTHERN SAMAR & SAMAR DIVISION BATCH 2-LOT 1**

DIVISION	SCHOOL ID	SCHOOL NAME	TOTAL NO. OF SITES	FURNITURE PACKAGE FOR KINDER	WORKING TABLE & STOOLS (7 SET PER CL)	STATUS OF DELIVERY	WITH PICTURE	WITH AFFIDAVIT	REMARKS
Eastern Samar	122582	San Roque Elementary School	1	1	-	COMPLETELY DELIVERED			
Northern Samar	123125	La Trinidad PS	1	1	-	COMPLETELY DELIVERED			
Northern Samar	122933	Malidong ES	1	1	-	COMPLETELY DELIVERED			
Northern Samar	122970	Bayog ES	1	1	-	COMPLETELY DELIVERED			
Northern Samar	122980	Gibatangan Elementary School	1	1	-	COMPLETELY DELIVERED			
Northern Samar	123026	Lourdes ES	1	1	-	COMPLETELY DELIVERED			
Northern Samar	123244	Pagsang-an ES	1	1	-	COMPLETELY DELIVERED			
Northern Samar	303533	Batag NHS	1	-	7	COMPLETELY DELIVERED			
Northern Samar	303544	Catubig Valley NHS	1	-	7	COMPLETELY DELIVERED			
Northern Samar	303553	Bangon NHS	1	-	14	COMPLETELY DELIVERED			
Northern Samar	303559	Lorenzo S. Menzon AIS	1	-	14	COMPLETELY DELIVERED			
Northern Samar	303560	Las Navas NHS	1	-	7	COMPLETELY DELIVERED			
Northern Samar	303581	San Roque-Pambujan Vocational High School	1	-	7	COMPLETELY DELIVERED			
Northern Samar	303583	Silvino Lubos Vocational High School	1	-	14	COMPLETELY DELIVERED			
Northern Samar	313602	Anito NHS	1	-	7	COMPLETELY DELIVERED			
Northern Samar	313603	Rawis NHS	1	-	7	COMPLETELY DELIVERED			
Northern Samar	313617	San Vicente NHS	1	-	14	COMPLETELY DELIVERED			

Northern Samar	313619	Dapdap NHS	1	-	14	COMPLETELY DELIVERED			
Samar (Western Samar)	123292	Lunang I ES	1	1	-	COMPLETELY DELIVERED			
Samar (Western Samar)	303632	Sto. Nino NHS	1	-	28	COMPLETELY DELIVERED			
Samar (Western Samar)	313708	San Jorge NHS	1	-	28	COMPLETELY DELIVERED			
Samar (Western Samar)	123474	Cagutsan PS	1	1	-	COMPLETELY DELIVERED			
Samar (Western Samar)	123479	Casab-Ahan ES	1	1	-	COMPLETELY DELIVERED			
Samar (Western Samar)	123490	Nipa ES	1	1	-	COMPLETELY DELIVERED	✓		
Samar (Western Samar)	123491	San Jose ES	1	1	-	COMPLETELY DELIVERED			
Samar (Western Samar)	123577	Mugdo ES	1	1	-	COMPLETELY DELIVERED			
Samar (Western Samar)	123588	Catalina ES	1	1	-	COMPLETELY DELIVERED			
Samar (Western Samar)	123716	Campiyak Elementary School	1	1	-	COMPLETELY DELIVERED			
Samar (Western Samar)	123901	Placer Elem. School	1	1	-	COMPLETELY DELIVERED			

Republic of the Philippines  
Department of Education (DepEd)  
Region VIII (Eastern Visayas)  
REGIONAL OFFICE VIII  
Palo, Leyte

**SUMMARY SCHEDULE OF SF 2016 ( 3 CLUSTER )**

Con g'l. Dist.	No.	SCHOOL RECIPIENT	Location	No. of units delivered based on IAR				STATUS OF DELIVERY	WITH PICTURE	WITH AFFIDAVIT	REMARKS
				ES/ JHS ARMCHAI R (45/CL)	ES/ JHS TTC	SHS ARMCHAI R (40/CL)	SHS TTC				
				(set)	(set)	(set)	(set)				
<b>LEYTE</b>											
1	1	PASIL ES	TANAUAN, LEYTE	90	2			COMPLETELY DELIVERED	✓		
1	2	CAHUMAYHUMAYAN ES	TANAUAN, LEYTE	135	3			COMPLETELY DELIVERED	✓		
1	3	SAN ROQUE ES	TANAUAN, LEYTE	270	6			COMPLETELY DELIVERED	✓		
1	4	STO. NINO ES	TANAUAN, LEYTE	540	12			COMPLETELY DELIVERED	✓		
1	5	STA. CRUZ NHS	SAN MIGUEL, LEYTE	270	6			COMPLETELY DELIVERED	✓		
<b>LEYTE</b>											
2	1	JUSTIMBASTE-REMANDABAN NHS (TABONTABON NHS)	TABONTABON, LEYTE			240	6	COMPLETELY DELIVERED	✓		
2	2	LIMA PS	PASTRANA, LEYTE	90	2			COMPLETELY DELIVERED	✓		
2	3	LEMON ES	LEMON ES	90	2			COMPLETELY DELIVERED	✓		
2	4	MAYORGA NHS	MAYORGA, LEYTE	90	2			COMPLETELY DELIVERED	✓		
<b>LEYTE</b>											
3	1	JUAN V. DELANTAR NHS	LEYTE, LEYTE	135	3			COMPLETELY DELIVERED	✓		
3	2	CONSUEGRA ES	LEYTE, LEYTE	45	1			COMPLETELY DELIVERED	✓		
3	3	CAHIGAN NHS	VILLABA, LEYTE	135	3			COMPLETELY DELIVERED	✓		
3	4	CALBUGOS ES	VILLABA, LEYTE	45	1			COMPLETELY DELIVERED	✓		
3	5	VILLABA COMPREHENSIVE HS	VILLABA, LEYTE	270	6			COMPLETELY DELIVERED	✓		
3	6	VILLABA COMPREHENSIVE HS	VILLABA, LEYTE	540	12	120	3	COMPLETELY DELIVERED	✓	✓	
3	7	CAHIGAN NHS	VILLABA, LEYTE	270	6			COMPLETELY DELIVERED	✓		
3	8	SULPA NHS	VILLABA, LEYTE	270	6			COMPLETELY DELIVERED	✓		
3	9	TABANGO NHS	TABANGO, LEYTE	90	2	80	2	COMPLETELY DELIVERED	✓		
3	10	MARCELINO R. VELOSO NHS	TABANGO, LEYTE	180	4	240	6	COMPLETELY DELIVERED	✓		
3	11	SAN ISIDRO NHS	SAN ISIDRO, LEYTE	180	4	240	6	COMPLETELY DELIVERED	✓		
<b>LEYTE</b>											
4	1	KANANGA NHS-MONTEBELLO ANNEX	KANANGA, LEYTE	180	4			COMPLETELY DELIVERED	✓		
4	2	KANANGA NHS	KANANGA, LEYTE	405	9			COMPLETELY DELIVERED	✓		
4	3	KANANGA NHS	KANANGA, LEYTE	270	6			COMPLETELY DELIVERED	✓		
4	4	KANANGA NHS	KANANGA, LEYTE	945	21	120	3	COMPLETELY DELIVERED	✓		
4	5	CANTUHAON NHS	PALOMPON, LEYTE	90	2			COMPLETELY DELIVERED	✓	✓	
4	6	MERIDA VS	MERIDA, LEYTE	450	10	560	14	COMPLETELY DELIVERED	✓		
4	7	ISABEL NHS COMPREHENSIVE	ISABEL, LEYTE	405	9	120	3	COMPLETELY DELIVERED	✓	✓	
4	8	ISABEL NHS COMPREHENSIVE	ISABEL, LEYTE	90	2			COMPLETELY DELIVERED	✓	✓	
<b>LEYTE</b>											
5	1	CAHAGNAAN NHS	MATALOM, LEYTE	135	3	40	1	COMPLETELY DELIVERED	✓		
5	2	POLAHONGON ES	MAHAPLAG, LEYTE	405	9			COMPLETELY DELIVERED	✓		
5	3	POLAHONGON ES	MAHAPLAG, LEYTE	270	6			COMPLETELY DELIVERED	✓		
5	4	POLAHONGON ES	MAHAPLAG, LEYTE	45	1			COMPLETELY DELIVERED	✓		
5	5	MANLILISID NHS	JAVIER, LEYTE	540	12			COMPLETELY DELIVERED	✓		
5	6	MANLILISID NHS	JAVIER, LEYTE	45	1			COMPLETELY DELIVERED	✓		



Republic of the Philippines  
Department of Education (DepEd)  
Region VIII (Eastern Visayas)  
REGIONAL OFFICE VIII  
Palo, Leyte

**SUMMARY SCHEDULE OF SF 2016 ( 2 CLUSTER )**

Con g'l. Dist.	No.		No. of UNITS TO BE DELIVERED				STATUS	With Picture	With Affidavit
			ES/ JHS ARMCHAI R (45/CL)	ES/ JHS TTC	SHS ARMCHAI R (40/CL)	SHS TTC			
			(set)	(set)	(set)	(set)			
<b>NORTHERN SAMAR</b>									
1	1	SHS WITHIN VICTORIA CS			480	12		✓	
1	2	VICTORIA CS	360	8				✓	
1	3	LOPE DE VEGA NHS (STAND ALONE)			320	8		✓	
1	4	LOPE DE VEGA NHS (STAND ALONE)			80	2			
1	5	LOPE DE VEGA NHS	270	6				✓	
1	6	ALLEN NHS	180	4				✓	
1	7	ALLEN NHS	180	4	640	16			
1	8	CATARMAN NHS	180	4					
1	9	CATARMAN NHS	360	8					
1	10	CATARMAN NHS	540	12					
1	11	CATARMAN II CS	540	12					
1	12	POLANGI NHS	315	7	40	1		✓	
1	13	CAWAYAN IS	315	7	40	1		✓	
1	14	SALVACION ES	270	6				✓	
1	15	ELADIO T. BALITE MSOF	360	8				✓	
1	16	SAN JUAN ES	270	6				✓	
1	17	BASILIO B. CHAN MEM. AGRICULTURAL AND INDUSTRIAL SCH.	270	6	80	2		✓	
1	18	BASILIO B. CHAN MEM. AGRICULTURAL AND INDUSTRIAL SCH.	135	3					
1	19	BIRI NHS	225	5	120	3			
1	20	MONDRAGON AGRO-IND'L HS	1080	24					
1	21	MONDRAGON AGRO-IND'L HS	270	6					
1	22	SAN ISIDRO NHS	945	21	120	3		✓	
<b>NORTHERN SAMAR</b>									
2	1	PAMBUHAN NHS	495	11	280	7		✓	
2	2	SUMOROY AGRO-IND'L SCHL	1080	24				✓	
2	3	SUMOROY AGRO-IND'L SCHL	405	9					
2	4	CATUBIG VALLEY NHS	225	5	440	11		✓	
2	5	DON JUAN F. AVALON NHS	810	18	240	6		✓	
2	6	GALA VOCATIONAL SCHOOL	495	11	40	1		✓	
2	7	ANITO NHS	315	7	40	1			
2	8	LAOANG NATIONAL TECHNICAL HS	450	10	240	6		✓	
2	9	RAWIS NHS	270	6				✓	
2	10	OLERAS NHS	270	6					
2	11	LAS NAVAS NHS	1080	24					
2	12	SILVINO LUBOS VHS	585	13	120	3		✓	

Republic of the Philippines  
Department of Education (DepEd)  
Region VIII (Eastern Visayas)  
REGIONAL OFFICE VIII  
Palo, Leyte

**SUMMARY SCHEDULE OF SF 2016 ( 3 CLUSTER )**

Con g'l. Dist.	No.		No. of UNITS TO BE DELIVERED				STATUS	With Picture	With Affidavit	Remarks
			ES/ JHS ARMCHAI R (45/CL)	ES/ JHS TTC	SHS ARMCHAI R (40/CL)	SHS TTC				
			(set)	(set)	(set)	(set)				
<b>TACLOBAN CITY</b>										
1	1	SHS IN TACLOBAN CITY			760	19				
1	2	V & G NHS			320	8	/	/		
1	3	RIDGEVIEW IS	2025	45			/	/		
1	4	CIRILO ROY MONTEJO NHS (PANALARON NHS)	270	6			/	/		
<b>MAASIN CITY</b>										
LONE	1	SHS WITHIN SAN RAFAEL ES			320	8	/	/		
<b>BAYBAY</b>										
5	1	BAYBAY NHS	360	8			/			
5	2	BAYBAY NHS	135	3						
<b>CALBAYOG CITY</b>										
1	1	CALBAYOG CITY NHS	1170	26	560	14	/	/		
1	2	CALBAYOG CITY NHS	180	4						
1	3	TABAWAN IS	180	4			/	/		
1	4	MALAGA NHS-PENA I ANNEX SCHL	180	4						
1	5									
<b>CATBALOGAN CITY</b>										
2	1	SILANGA NHS			240	6	/			

**REPUBLIC OF THE PHILIPPINES  
DEPARTMENT OF EDUCATION  
CY 2016 BASIC EDUCATIONAL FACILITIES FUND  
PROVISION OF SCHOOL FURNITURE - ALLOCATION FOR COOPERATIVE OF PWDs**

**Implementing Unit: REGIONAL OFFICE**

REGION	DIVISION	SCHOOL ID	SCHOOL NAME	With Picture	With Affidavit	
Region VIII	Northern Samar	123055	Balicuatro Elementary School	/		
Region VIII	Northern Samar	123058	Barobaybay ES	/		
Region VIII	Northern Samar	123064	Lavezares Central Elementary School	/		
Region VIII	Northern Samar	123065	Libas ES	/		
Region VIII	Northern Samar	123066	Libertad ES	/		
Region VIII	Northern Samar	123067	Macarthur ES	/		
Region VIII	Northern Samar	123068	Magsaysay ES	/		
Region VIII	Northern Samar	123069	Malicolico ES	/		
Region VIII	Northern Samar	123070	Maravilla ES	/		
Region VIII	Northern Samar	123073	San Juan ES	/		
Region VIII	Northern Samar	123074	San Miguel ES	/		
Region VIII	Northern Samar	123076	Urdaneta Central School	/		
Region VIII	Northern Samar	303561	Basilio B. Chan Mem. Agricultural and Industrial Sch.	/		
Region VIII	Northern Samar	313623	MARAVILLA NATIONAL HIGH SCHOOL	/		
Region VIII	Northern Samar	123188	Aguada PS	/		
Region VIII	Northern Samar	123189	Bantolinao ES	/		
Region VIII	Northern Samar	123190	Buenavista ES			
Region VIII	Northern Samar	123191	Guindaulan Elementary School	/		
Region VIII	Northern Samar	123193	Kailingan ES			
Region VIII	Northern Samar	123194	Ligaya ES			
Region VIII	Northern Samar	123195	Rosario Central School			
Region VIII	Northern Samar	123196	Salhag Elementary School			
Region VIII	Northern Samar	193004	R.F. Tobes Mem. School			
Region VIII	Northern Samar	303573	Rosario NHS			
Region VIII	Northern Samar	313626	Guindaulan NHS			
Region VIII	Northern Samar	123207	Buenavista ES	/		

**REPUBLIC OF THE PHILIPPINES  
DEPARTMENT OF EDUCATION  
CY 2016 BASIC EDUCATIONAL FACILITIES FUND  
PROVISION OF SCHOOL FURNITURE - ALLOCATION FOR COOPERATIVE OF PWDs**

**Implementing Unit: REGIONAL OFFICE**

REGION	DIVISION	SCHOOL ID	SCHOOL NAME	With Picture	With Affidavit	
Region VIII	Northern Samar	123208	Cabalwa Primary School	/		
Region VIII	Northern Samar	123209	Caglanipao ES	/		
Region VIII	Northern Samar	123210	Happy Valley Elementary School	/		
Region VIII	Northern Samar	123213	Salvacion ES	/		
Region VIII	Northern Samar	123214	San Isidro CES	/		
Region VIII	Northern Samar	123215	San Juan Elementary School	/		
Region VIII	Northern Samar	123216	San Roque ES	/		
Region VIII	Northern Samar	123218	Sto. Niño Elementary School	/		
Region VIII	Northern Samar	123219	Veriato ES	/		
Region VIII	Northern Samar	303530	Alegria NHS	/		
Region VIII	Northern Samar	303578	San Isidro NHS (San Isidro)	/		
Region VIII	Northern Samar	313601	Veriato National High School	/		
Region VIII	Northern Samar	123271	Buenasuerte ES	/		
Region VIII	Northern Samar	123272	Buenos Aires ES	/		
Region VIII	Northern Samar	123273	Colab-og ES	/		
Region VIII	Northern Samar	123274	Erenas ES	/		
Region VIII	Northern Samar	123276	Libertad ES	/		
Region VIII	Northern Samar	123277	Luisita ES	/		
Region VIII	Northern Samar	123278	Lungib ES	/		
Region VIII	Northern Samar	123279	Maxvilla ES	/		
Region VIII	Northern Samar	123280	Pasabuena ES	/		
Region VIII	Northern Samar	123282	San Miguel Elementary School	/		
Region VIII	Northern Samar	123284	Victoria CS	/		
Region VIII	Northern Samar	303585	Victoria NHS	/		
Region VIII	Northern Samar	123104	Burgos ES	/		
Region VIII	Northern Samar	123105	Jubasan ES	/		

**REPUBLIC OF THE PHILIPPINES  
DEPARTMENT OF EDUCATION  
CY 2016 BASIC EDUCATIONAL FACILITIES FUND  
PROVISION OF SCHOOL FURNITURE - ALLOCATION FOR COOPERATIVE OF PWDs**

**Implementing Unit: REGIONAL OFFICE**

REGION	DIVISION	SCHOOL ID	SCHOOL NAME	With Picture	With Affidavit
Region VIII	Northern Samar	123106	Magsaysay ES	✓	
Region VIII	Northern Samar	123107	Magtaon ES	✓	
Region VIII	Northern Samar	123109	Naparasan ES	✓	
Region VIII	Northern Samar	123111	Quezon ES	✓	
Region VIII	Northern Samar	123112	San Jose ES	✓	
Region VIII	Northern Samar	123113	Siljagon Elementary School	✓	
Region VIII	Northern Samar	193008	Manaybanay Elementary School	✓	
Region VIII	Northern Samar	193011	Sta. Potenciana ES	✓	
Region VIII	Northern Samar	193015	Mapanas North PS	✓	
Region VIII	Northern Samar	313607	Siljagon NHS	✓	
Region VIII	Northern Samar	313622	Magtaon NHS	✓	
Region VIII	Northern Samar	123170	Cababto-an ES	✓	
Region VIII	Northern Samar	123173	Canjumadal ES	✓	
Region VIII	Northern Samar	123174	Don Sixto Balanquit Elementary School	✓	
Region VIII	Northern Samar	123175	Dona Anecita PS	✓	
Region VIII	Northern Samar	123176	Giadgawan ES	✓	
Region VIII	Northern Samar	123177	Ginulgan Central	✓	
Region VIII	Northern Samar	123178	Giparayan ES	✓	
Region VIII	Northern Samar	123179	Igot ES	✓	
Region VIII	Northern Samar	123180	Inanahawan ES	✓	
Region VIII	Northern Samar	123181	Manahaw Elementary School	✓	
Region VIII	Northern Samar	123182	Pambujan 1 Central School	✓	
Region VIII	Northern Samar	123183	Paninirongan ES	✓	
Region VIII	Northern Samar	123184	San Ramon Elementary School	✓	
Region VIII	Northern Samar	123185	Senonogan ES	✓	
Region VIII	Northern Samar	123186	Tula Elementary School	✓	

**REPUBLIC OF THE PHILIPPINES**  
**DEPARTMENT OF EDUCATION**  
**CY 2016 BASIC EDUCATIONAL FACILITIES FUND**  
**PROVISION OF SCHOOL FURNITURE - ALLOCATION FOR COOPERATIVE OF PWDs**

Implementing Unit: **REGIONAL OFFICE**

REGION	DIVISION	SCHOOL ID	SCHOOL NAME	With Picture	With Affidavit	
Region VIII	Northern Samar	123187	Ynaguingayan Elementary School	✓		
Region VIII	Northern Samar	193013	Barangay Uno Elementary School	✓		
Region VIII	Northern Samar	303569	Pambujan NHS	✓		
Region VIII	Northern Samar	303581	San Roque-Pambujan Vocational High School	✓		
Region VIII	Northern Samar	313621	Zoilo T. Lobos Memorial High School	✓		

**REPUBLIC OF THE PHILIPPINES  
DEPARTMENT OF EDUCATION  
CY 2016 BASIC EDUCATIONAL FACILITIES FUND**

**PROVISION OF SCHOOL FURNITURE - ALLOCATION FOR COOPERATIVE OF PWDs**

**Implementing Unit: REGIONAL OFFICE**

REGION	DIVISION	SCHOOL ID	SCHOOL NAME	SCHOOL DISTRICT	WITH PICTURE	WITH AFFIDAVIT
Region VIII	Leyte	121006	Bacong Elemenetary School	BABATNGON		
Region VIII	Leyte	121007	Bagong Silang Elementary School	BABATNGON		
Region VIII	Leyte	121008	Biasong Elementary School	BABATNGON		
Region VIII	Leyte	121010	Guintigui-an Elementary School	BABATNGON		
Region VIII	Leyte	121014	Naga-asan Elementary School	BABATNGON		
Region VIII	Leyte	121017	Rizal ES	BABATNGON		
Region VIII	Leyte	121019	San Ricardo Elementary School	BABATNGON		
Region VIII	Leyte	121020	Sangputan Elementary School	BABATNGON		
Region VIII	Leyte	121021	Taguite Elementary School	BABATNGON		
Region VIII	Leyte	121024	Villa Magsaysay Elementary School	BABATNGON		
Region VIII	Leyte	303343	Juan S. Tismo National High School (Babatngon National High School)	BABATNGON		
Region VIII	Leyte	303401	Malibago National High School	BABATNGON		
Region VIII	Leyte	303413	Pagsulhugon National High School	BABATNGON		
Region VIII	Leyte	303421	San Agustin National High School	BABATNGON		
Region VIII	Leyte	191580	Dona Brigida Primary School	TOLOSA		
Region VIII	Leyte	121848	Bagacay Elementary School	SAN MIGUEL		
Region VIII	Leyte	121849	Bahay Elementary School	SAN MIGUEL		
Region VIII	Leyte	121850	Busay Primary School	SAN MIGUEL		
Region VIII	Leyte	121851	Cabatanuhan Elementary School	SAN MIGUEL		
Region VIII	Leyte	121852	Canap Elementary School	SAN MIGUEL		
Region VIII	Leyte	121853	Capilihan Primary School	SAN MIGUEL		
Region VIII	Leyte	121854	Caray-caray Elementary School	SAN MIGUEL		
Region VIII	Leyte	121855	Guinciaman Elementary School	SAN MIGUEL		
Region VIII	Leyte	121856	Impo Primary School	SAN MIGUEL		
Region VIII	Leyte	121857	Kinalumsan Elementary School	SAN MIGUEL		

**REPUBLIC OF THE PHILIPPINES**  
**DEPARTMENT OF EDUCATION**  
**CY 2016 BASIC EDUCATIONAL FACILITIES FUND**

**PROVISION OF SCHOOL FURNITURE - ALLOCATION FOR COOPERATIVE OF PWDs**

**Implementing Unit: REGIONAL OFFICE**

REGION	DIVISION	SCHOOL ID	SCHOOL NAME	SCHOOL DISTRICT	WITH PICTURE	WITH AFFIDAVIT
Region VIII	Leyte	121858	Lukay Elementary School	SAN MIGUEL		
Region VIII	Leyte	121859	Malaguinabot Elementary School	SAN MIGUEL		
Region VIII	Leyte	121860	Malpag Primary School	SAN MIGUEL		
Region VIII	Leyte	121861	Mawodpawod Elementary School	SAN MIGUEL		
Region VIII	Leyte	121862	Patong Elementary School	SAN MIGUEL		
Region VIII	Leyte	121863	Pinarigusan Primary School	SAN MIGUEL		
Region VIII	Leyte	121864	San Andres Primary School	SAN MIGUEL		
Region VIII	Leyte	121865	San Miguel Central School	SAN MIGUEL		
Region VIII	Leyte	121866	Santol Elementary School	SAN MIGUEL		
Region VIII	Leyte	121867	Sta. Cruz Elementary School	SAN MIGUEL		
Region VIII	Leyte	191533	Bairan Primary School	SAN MIGUEL		
Region VIII	Leyte	303426	San Miguel National High School	SAN MIGUEL		
Region VIII	Leyte	303429	Sta. Cruz National High School	SAN MIGUEL		
Region VIII	Leyte	121918	Amanluran Primary School	TANAUAN		
Region VIII	Leyte	121919	Arado Elementary School	TANAUAN		
Region VIII	Leyte	121920	Bislig Elementary School	TANAUAN		
Region VIII	Leyte	121922	Calsadahay Elementary School	TANAUAN		
Region VIII	Leyte	121923	Canbalisara Elementary School	TANAUAN		
Region VIII	Leyte	121924	Catmon Elementary School	TANAUAN		
Region VIII	Leyte	121925	Cogon Elementary School	TANAUAN		
Region VIII	Leyte	121926	Limbuhan Elementary School	TANAUAN		
Region VIII	Leyte	121927	Picas Elementary School	TANAUAN		
Region VIII	Leyte	121928	San Roque Elementary School	TANAUAN		
Region VIII	Leyte	121929	San Victor Elementary School	TANAUAN		
Region VIII	Leyte	121930	Sto. Nino Elementary School	TANAUAN		



**REPUBLIC OF THE PHILIPPINES  
DEPARTMENT OF EDUCATION  
CY 2016 BASIC EDUCATIONAL FACILITIES FUND**

**PROVISION OF SCHOOL FURNITURE - ALLOCATION FOR COOPERATIVE OF PWDs**

**Implementing Unit: REGIONAL OFFICE**

REGION	DIVISION	SCHOOL ID	SCHOOL NAME	SCHOOL DISTRICT	WITH PICTURE	WITH AFFIDAVIT
Region VIII	Leyte	121932	Tanauan I Central School	TANAUAN		
Region VIII	Leyte	121933	Tugop Elementary School	TANAUAN		
Region VIII	Leyte	121934	CALOGCOG ELEMENTARY SCHOOL	TANAUAN		
Region VIII	Leyte	121935	Camire Elementary School	TANAUAN		
Region VIII	Leyte	121938	Maghulod Elementary School	TANAUAN		
Region VIII	Leyte	121940	Maribi Elementary School	TANAUAN		
Region VIII	Leyte	121943	San Isidro Elementary School	TANAUAN		
Region VIII	Leyte	121944	Sta. Elena Elementary School	TANAUAN		
Region VIII	Leyte	191515	Atipolo Elementary School	TANAUAN		
Region VIII	Leyte	191516	Pasil Elementary School	TANAUAN		
Region VIII	Leyte	191521	Lapay Elementary School	TANAUAN		
Region VIII	Leyte	191522	Sacme Primary School	TANAUAN		
Region VIII	Leyte	191526	Cahumayhumayan Elementary School	TANAUAN		
Region VIII	Leyte	191527	Guingauan Primary School	TANAUAN		
Region VIII	Leyte	303386	Kiling National High School	TANAUAN		
Region VIII	Leyte	303388	Tanauan Sch. Of Craftsmanship & Home Industries (LIT-Tanauan Campus)Campus	TANAUAN		
Region VIII	Leyte	303437	Tanauan National High School (San Roque NHS)	TANAUAN		
Region VIII	Leyte	121026	Barugo I Central School	BARUGO		
Region VIII	Leyte	121031	Canomantag Elementary School	BARUGO		
Region VIII	Leyte	121033	Hilaba Elementary School	BARUGO		
Region VIII	Leyte	121034	Hinugayan Elementary School	BARUGO		
Region VIII	Leyte	121042	Abango Elementary School	BARUGO		
Region VIII	Leyte	121044	Balire Primary School	BARUGO		
Region VIII	Leyte	121045	Barugo II Central School	BARUGO		
Region VIII	Leyte	121046	Bukid Elementary School	BARUGO		

**REPUBLIC OF THE PHILIPPINES**  
**DEPARTMENT OF EDUCATION**  
**CY 2016 BASIC EDUCATIONAL FACILITIES FUND**

**PROVISION OF SCHOOL FURNITURE - ALLOCATION FOR COOPERATIVE OF PWDs**

**Implementing Unit: REGIONAL OFFICE**

REGION	DIVISION	SCHOOL ID	SCHOOL NAME	SCHOOL DISTRICT	WITH PICTURE	WITH AFFIDAVIT
Region VIII	Leyte	121048	Can-isak Elementary School	BARUGO		
Region VIII	Leyte	121050	Guindaohan Elementary School	BARUGO		
Region VIII	Leyte	121051	Pikas Elementary School	BARUGO		
Region VIII	Leyte	121052	Pitogo Elementary School	BARUGO		
Region VIII	Leyte	121054	Roosevelt Elementary School	BARUGO		
Region VIII	Leyte	191536	San Roque Primary School	BARUGO		
Region VIII	Leyte	303363	Celestino De Guzman Memorial National High School	BARUGO		
Region VIII	Leyte	303433	Sta. Rosa National High School	BARUGO		
Region VIII	Leyte	313324	Barugo National High School	BARUGO		
Region VIII	Leyte	121153	Buenavista Elementary School	BURAUEN		
Region VIII	Leyte	121157	Cadahunan Elementary School	BURAUEN		
Region VIII	Leyte	121158	Calao Elementary School	BURAUEN		
Region VIII	Leyte	121159	Catagbacan Elementary School	BURAUEN		
Region VIII	Leyte	121161	Hugpa West Elementary School	BURAUEN		
Region VIII	Leyte	121162	Libas ES	BURAUEN		
Region VIII	Leyte	121163	Maabab Elementary School	BURAUEN		
Region VIII	Leyte	121164	Maghubas Elementary School	BURAUEN		
Region VIII	Leyte	121167	Malaihao Elementary School	BURAUEN		
Region VIII	Leyte	121170	San Diego Elementary School	BURAUEN		
Region VIII	Leyte	121172	San Pablo ES	BURAUEN		
Region VIII	Leyte	121173	Taboanon Elementary School	BURAUEN		
Region VIII	Leyte	121176	Tambis PS	BURAUEN		
Region VIII	Leyte	121177	Toloyao Elementary School	BURAUEN		
Region VIII	Leyte	121179	Villa Rosas Elementary School	BURAUEN		
Region VIII	Leyte	121180	ABC Hall Elementary School	BURAUEN		

**REPUBLIC OF THE PHILIPPINES  
DEPARTMENT OF EDUCATION  
CY 2016 BASIC EDUCATIONAL FACILITIES FUND**

**PROVISION OF SCHOOL FURNITURE - ALLOCATION FOR COOPERATIVE OF PWDs**

**Implementing Unit: REGIONAL OFFICE**

REGION	DIVISION	SCHOOL ID	SCHOOL NAME	SCHOOL DISTRICT	WITH PICTURE	WITH AFFIDAVIT
Region VIII	Leyte	121181	Arado Elementary School	BURAUEN		
Region VIII	Leyte	121182	Belibol Primary School	BURAUEN		
Region VIII	Leyte	121183	Bobon Primary School	BURAUEN		
Region VIII	Leyte	121184	Burabod Elementary School	BURAUEN		
Region VIII	Leyte	121185	Burauen South Central School	BURAUEN		
Region VIII	Leyte	121186	Cagangon Elementary School	BURAUEN		
Region VIII	Leyte	121190	Cantimawa ES	BURAUEN		
Region VIII	Leyte	121192	Hibunauan Elementary School	BURAUEN		
Region VIII	Leyte	121193	Ilihan Primary School	BURAUEN		
Region VIII	Leyte	121195	Limburan Elementary School	BURAUEN		
Region VIII	Leyte	121197	Lusad Elementary School	BURAUEN		
Region VIII	Leyte	121201	Patag Primary School	BURAUEN		
Region VIII	Leyte	121202	Pusod Elementary School	BURAUEN		
Region VIII	Leyte	121203	Roxas Primary School	BURAUEN		
Region VIII	Leyte	191552	Hapunan Primary School	BURAUEN		
Region VIII	Leyte	303354	Burauen National High School	BURAUEN		
Region VIII	Leyte	313325	Hibunauan National High School	BURAUEN		
Region VIII	Leyte	121572	La Paz Central School	LAPAZ		
Region VIII	Leyte	121334	San Jose Central School	DULAG		
Region VIII	Leyte	121461	Jaro I Central Elementary School	JARO		
Region VIII	Leyte	121834	Daja Elementary School	SAN ISIDRO		
Region VIII	Leyte	121056	Alegria Elementary School	BATO		
Region VIII	Leyte	121057	Alejos Elementary School	BATO		
Region VIII	Leyte	121058	Amagos Elementary School	BATO		
Region VIII	Leyte	121059	Anahawan Elementary School	BATO		

**REPUBLIC OF THE PHILIPPINES  
DEPARTMENT OF EDUCATION  
CY 2016 BASIC EDUCATIONAL FACILITIES FUND**

**PROVISION OF SCHOOL FURNITURE - ALLOCATION FOR COOPERATIVE OF PWDs**

**Implementing Unit: REGIONAL OFFICE**

REGION	DIVISION	SCHOOL ID	SCHOOL NAME	SCHOOL DISTRICT	WITH PICTURE	WITH AFFIDAVIT
Region VIII	Leyte	121060	Bago Elementary School	BATO		
Region VIII	Leyte	121061	Bato Central School	BATO		
Region VIII	Leyte	121062	Buli Elementary School	BATO		
Region VIII	Leyte	121063	Dawahon Elementary School	BATO		
Region VIII	Leyte	121064	Dolho Elementary School	BATO		
Region VIII	Leyte	121065	Himama-a Elementary School	BATO		
Region VIII	Leyte	121066	Imelda Elementary School	BATO		
Region VIII	Leyte	121067	Katipunan Elementary School	BATO		
Region VIII	Leyte	121068	Liberty Elementary School	BATO		
Region VIII	Leyte	121069	Mabini Elementary School	BATO		
Region VIII	Leyte	121070	Marcelo Elementary School	BATO		
Region VIII	Leyte	121071	Naga Elementary School	BATO		
Region VIII	Leyte	121072	Osmeña Elementary School	BATO		
Region VIII	Leyte	121073	Plaridel Elementary School	BATO		
Region VIII	Leyte	121074	Ponong Elementary School	BATO		
Region VIII	Leyte	121075	Tabunok Elementary School	BATO		
Region VIII	Leyte	121076	Tagaytay Elementary School	BATO		
Region VIII	Leyte	121077	Talisayan Primary School	BATO		
Region VIII	Leyte	121078	Tugas Elementary School	BATO		
Region VIII	Leyte	191503	Cebuana Primary School	BATO		
Region VIII	Leyte	191563	Rivilla Primary School	BATO		
Region VIII	Leyte	191578	Domagocdoc Primary School	BATO		
Region VIII	Leyte	303338	Anahawan National High School	BATO		
Region VIII	Leyte	303346	Bato National High School	BATO		
Region VIII	Leyte	303347	Bato School of Fisheries	BATO		

**REPUBLIC OF THE PHILIPPINES  
DEPARTMENT OF EDUCATION  
CY 2016 BASIC EDUCATIONAL FACILITIES FUND**

**PROVISION OF SCHOOL FURNITURE - ALLOCATION FOR COOPERATIVE OF PWDs**

**Implementing Unit: REGIONAL OFFICE**

REGION	DIVISION	SCHOOL ID	SCHOOL NAME	SCHOOL DISTRICT	WITH PICTURE	WITH AFFIDAVIT
Region VIII	Leyte	313320	Buli National High School	BATO		
Region VIII	Leyte	121410	Ma-asin Elementary School	HINDANG		
Region VIII	Leyte	121413	Tabok Elementary School	HINDANG		
Region VIII	Leyte	121414	Tagbibí Elementary School	HINDANG		
Region VIII	Leyte	303375	Hindang national high school	HINDANG		
Region VIII	Leyte	121397	Anahaw Elementary School	HINDANG		
Region VIII	Leyte	121398	Anolon Elementary School	HINDANG		
Region VIII	Leyte	121399	Baldoza Elementary School	HINDANG		
Region VIII	Leyte	121400	Bontoc Elementary School	HINDANG		
Region VIII	Leyte	121401	Bulacan Elementary School	HINDANG		
Region VIII	Leyte	121402	Canha-ayon Elementary School	HINDANG		
Region VIII	Leyte	121403	Capudlosan Elementary School	HINDANG		
Region VIII	Leyte	121404	Doos Sur Elementary School	HINDANG		
Region VIII	Leyte	121405	Doos Elementary School	HINDANG		
Region VIII	Leyte	121406	Himacugo Elementary School	HINDANG		
Region VIII	Leyte	121407	Himokilan Elementary School	HINDANG		
Region VIII	Leyte	121408	Hindang Central School	HINDANG		
Region VIII	Leyte	121409	Katipunan Elementary School	HINDANG		
Region VIII	Leyte	121411	Mabagon Elementary School	HINDANG		
Region VIII	Leyte	121412	Mahilum Elementary School	HINDANG		
Region VIII	Leyte	303350	Bontoc National High School	HINDANG		
Region VIII	Leyte	313329	Capudlosan National High School	HINDANG		
<b>Region VIII</b>	<b>Leyte Total</b>					

**NO.**

**20-072-101**

REPUBLIC OF THE PHILIPPINES  
DEPARTMENT OF EDUCATION  
CY 2016 BASIC EDUCATIONAL FACILITIES FUND

PROVISION OF SCHOOL FURNITURE - ALLOCATION FOR COOPERATIVE OF PWDs

Implementing Unit: REGIONAL OFFICE

REGION	DIVISION	SCHOOL ID	SCHOOL NAME	SCHOOL DISTRICT	WITH PICTURE	WITH AFFIDAVIT
--------	----------	-----------	-------------	-----------------	--------------	----------------

Amount

14,736,405.00

/Republic of the Philippines)

\_\_\_\_\_

**AFFIDAVIT**

I, \_\_\_\_\_ of legal age, Filipino, single/married, and a resident of \_\_\_\_\_, after having been duly sworn according to law, depose and state:

1. That I am the present \_\_\_\_\_ of \_\_\_\_\_;

2. That as per records, last \_\_\_\_\_, our school received the following School Furniture:

\_\_\_\_\_  
\_\_\_\_\_  
\_\_\_\_\_  
\_\_\_\_\_

3. That I am executing this affidavit in compliance with the requirements by the Commission on Audit (COA) in relation to the abovementioned project.

4. That I attest to the truth of the foregoing facts.

IN WITNESS WHEREOF, I have hereunto set my hand this June \_\_\_\_\_, 2023 in \_\_\_\_\_, Philippines.

\_\_\_\_\_  
Affiant

SUBSCRIBE and SWORN TO before me this \_\_\_\_\_, 2023 in \_\_\_\_\_, affiant exhibiting to me his \_\_\_\_\_ and picture as proof of his identity.

Doc No.:  
Page No.:  
Book No.:  
Series of 202\_

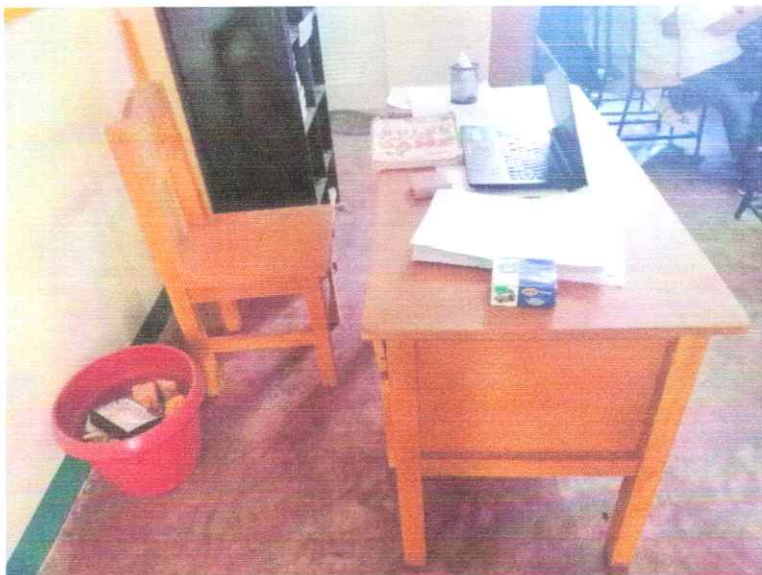


Republic of the Philippines  
**Department of Education**  
REGION VIII - EASTERN VISAYAS

**School Furniture Design**

1. CY 2018 BASIC EDUCATIONAL FACILITIES FUND-Savings (Sta. Rita Enterprises)

Type: Wood and Steel      - Learners  
All Wood                      - Teachers Table

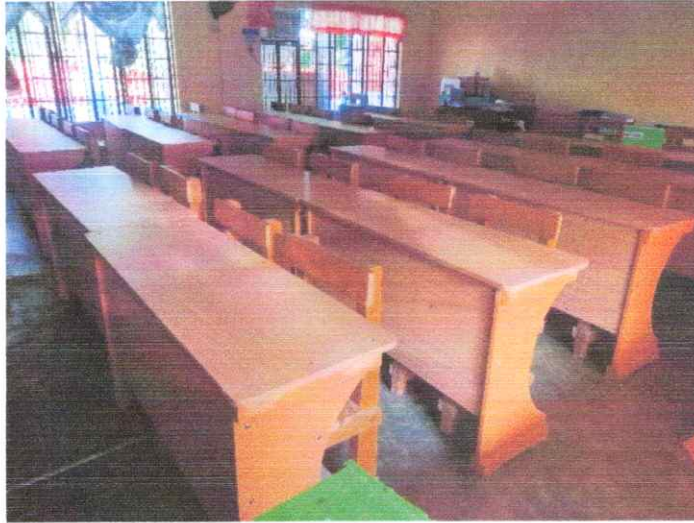


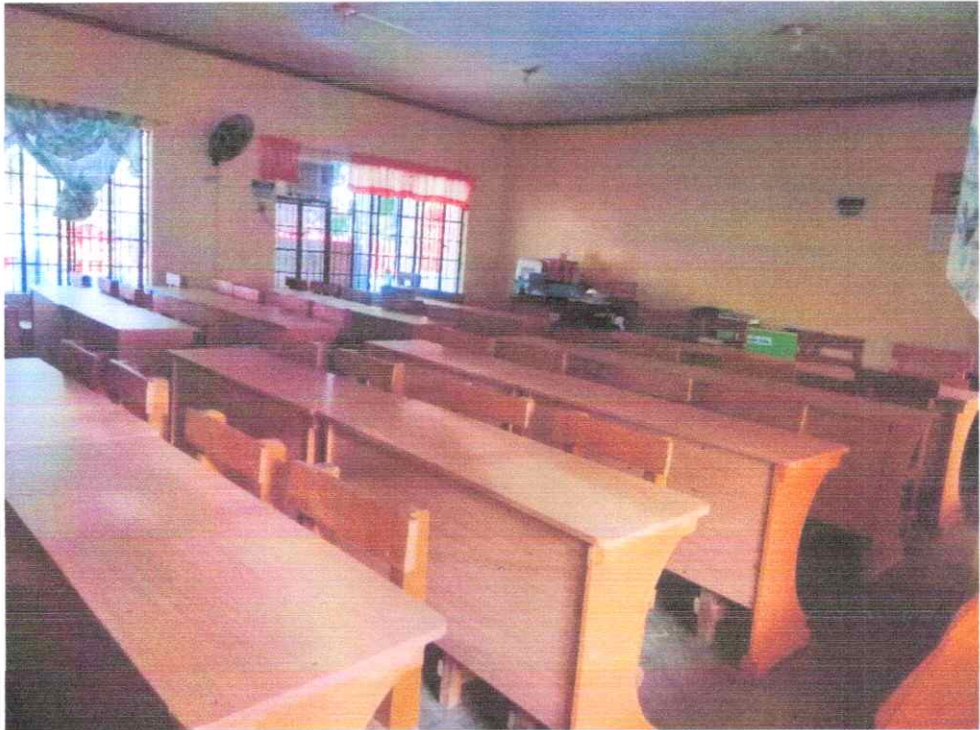


2. CY 2018 Cluster 2- Lot 5 (Sta. Rita Enterprises)

Type: All Wood  
All Wood

- Learners  
- Teachers Table





3. CY 2018 Cluster 2- Lot 7 (Sta. Rita Enterprises)

Type: All Wood  
All Wood

- Learners  
- Teachers Table

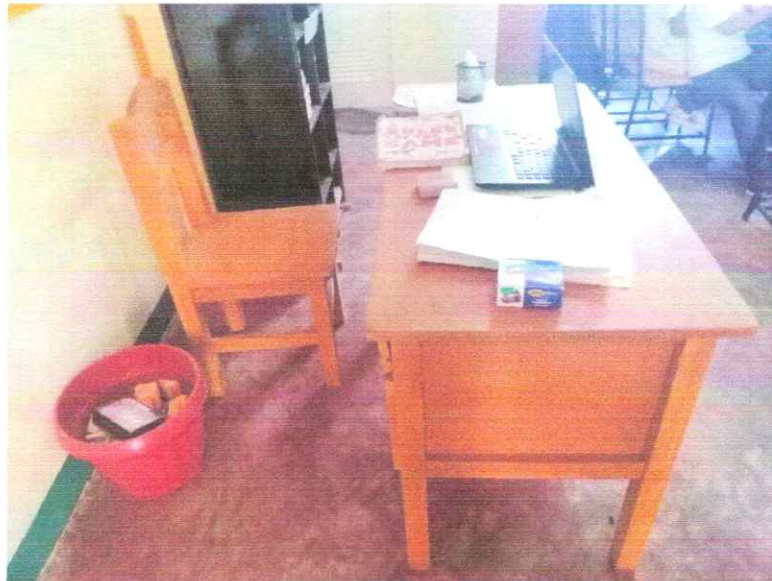




4. CY 2018 Cluster 2- Lot 6 (Sta. Rita Enterprises)

Type: All Wood - Learners

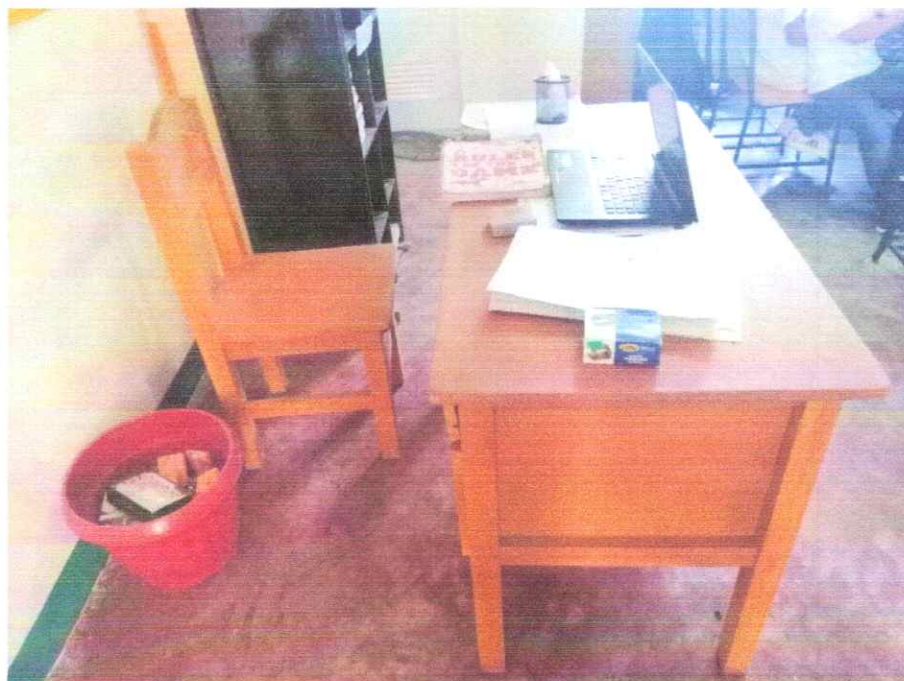
All Wood - Teachers Table



5. CY 2019 Cluster 4 (Sta. Rita Enterprises)

Type: Wood and Steel - Learners

All Wood - Teachers Table



6. CY 2017 Batch 3 lot 1 Cooperative (HPPC)

Type: Plastic Arm Chair (Green Color)

All Wood

- Learners

- Teachers Table



7. CY 2017 Batch 2- lot1 (HOPE)

Type: Wood and Steel w/ Stool - Secondary

All Wood - Teachers Table





8. CY 2017 Batch 2- lot 2 (HOPE)

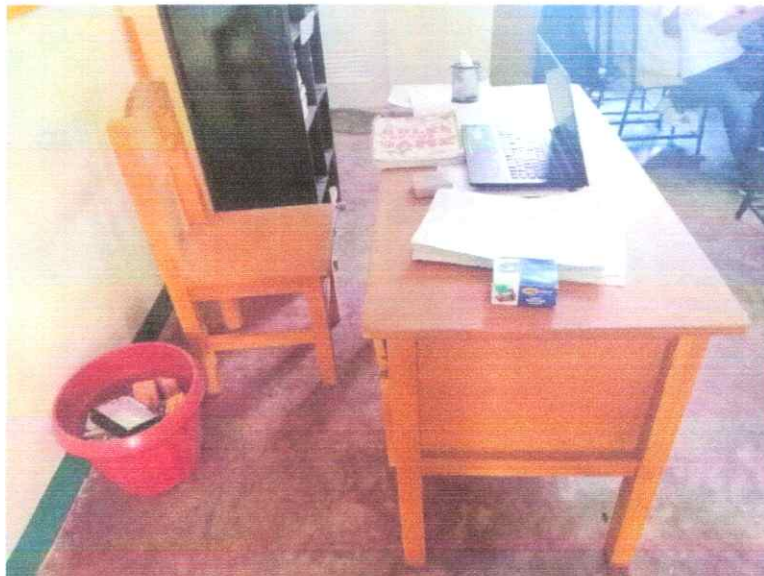
Type: Wood and Steel w/ Stool - Secondary

All Wood - Teachers Table



9. CY 2019 Cluster 5 (Sta. Rita Enterprises)

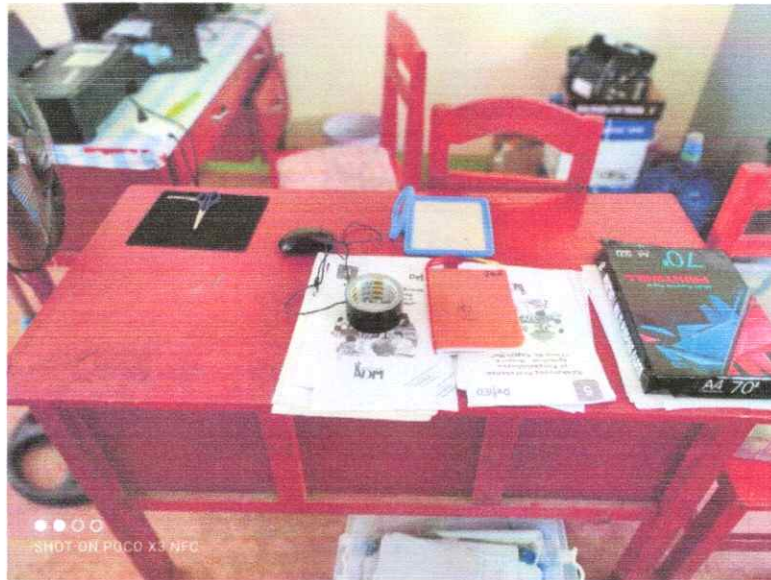
Type: Wood and Steel      - Learners  
All Wood                      - Teachers Table



10. SF 2016 Cluster 1 (HAPPC)

Type: Plastic Arm Chair (Green Color)  
All Wood

- Learners  
- Teachers Table



12. SF 2016 Cluster 1 (HAPPC)

Type: Plastic Arm Chair (Green Color)  
All Wood

- Learners  
- Teachers Table



11. SF 2016 Cluster 2 (HAPPC)

Type: Plastic Arm Chair (Green Color)  
All Wood

- Learners  
- Teachers Table



13. SF 2016 PROVISION OF SCHOOL FURNITURE - ALLOCATION FOR COOPERATIVE OF PWDs (HAPPC)

Type: Plastic Arm Chair (Green Color)  
All Wood

- Learners  
- Teachers Table



14. SF 2016 PROVISION OF SCHOOL FURNITURE - ALLOCATION FOR COOPERATIVE OF PWDs (HAPPC)

Type: Plastic Arm Chair (Green Color)  
All Wood

- Learners  
- Teachers Table

