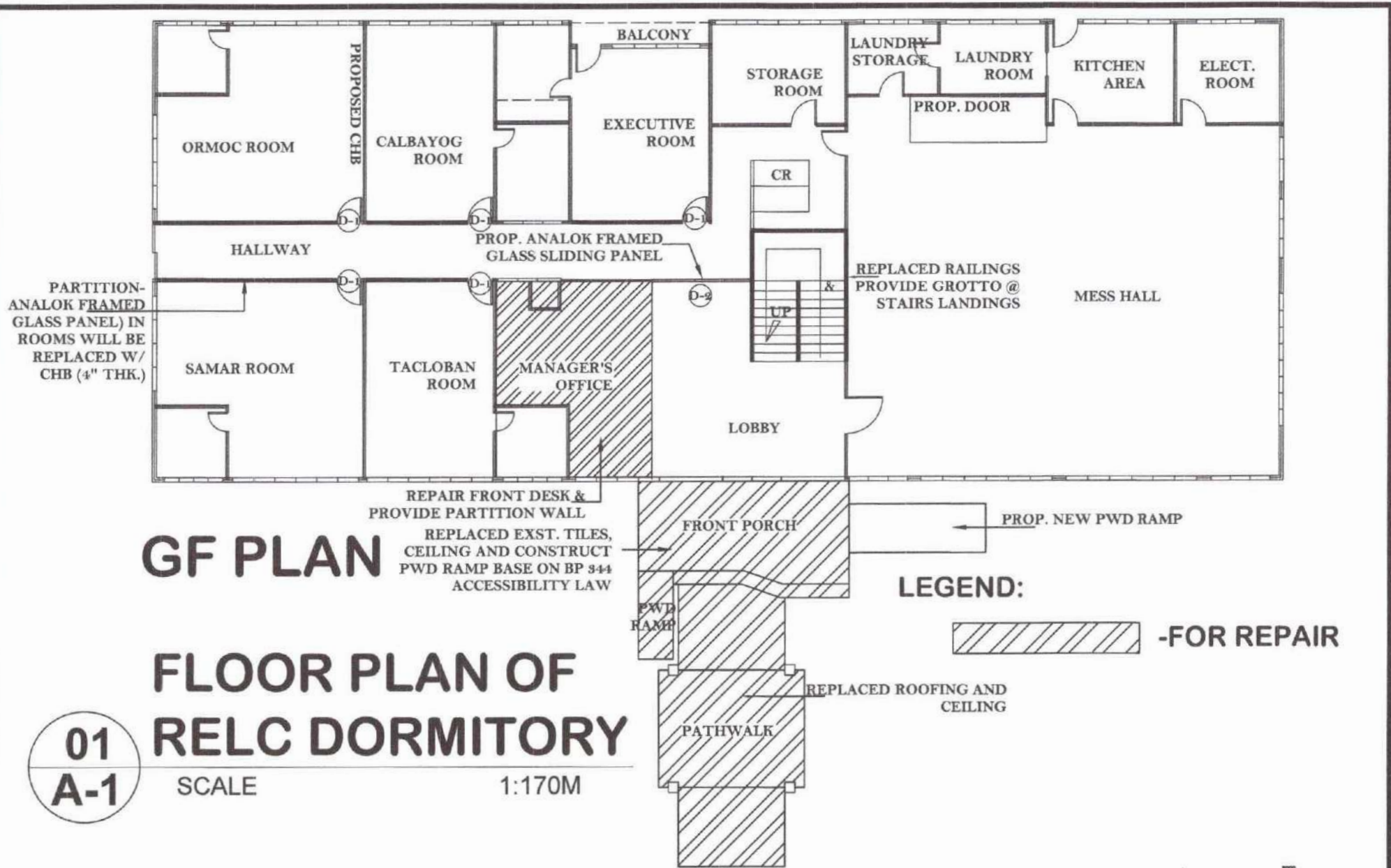


**PLANS & DRAWINGS
OF
PROPOSED REPAIR OF RO-8 RELC
DORMITORY PHASE 2**



GF PLAN


FLOOR PLAN OF RELC DORMITORY


01
A-1

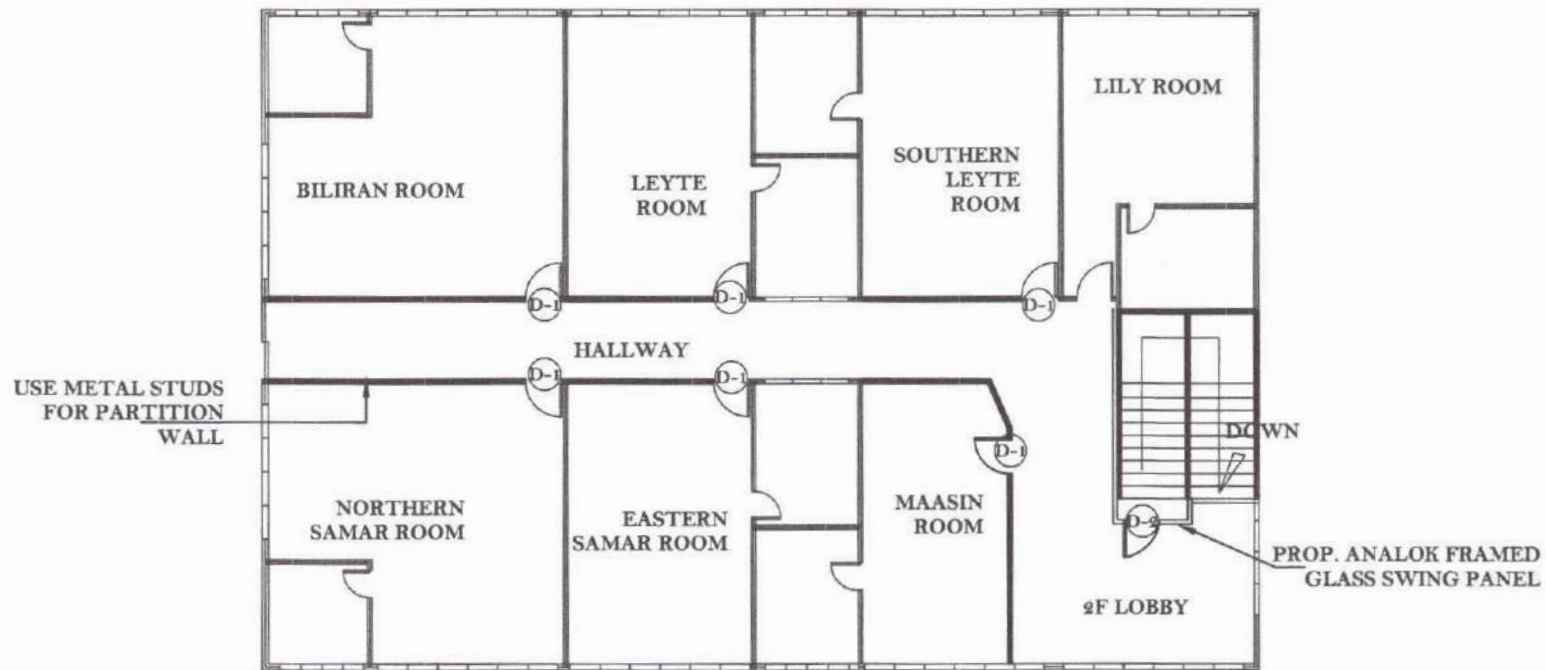
SCALE

1:170M

LEGEND:

 -FOR REPAIR

	PROJECT TITLE:	PREPARED BY:	CHECKED BY:	NOTED BY:	RECOMMENDING APPROVAL:	APPROVED BY:	SHEET NO.
	PROPOSED REPAIR OF RELC DORMITORY-PHASE 2	KATHLEEN LESLIE S. NIJAGA ENGINEER II	RYAN JAY L. BAGON REGIONAL ENGINEER	HARVIE D. VILLAMOR, EdD CHIEF, HRDD	RONEL D. AL K. FIRMO, PhD, CESO IV ASSISTANT REGIONAL DIRECTOR, RO-8	EVELYN R. FETALVERO, CESO III REGIONAL DIRECTOR, RO-8	1
	LOCATION: GOVT. CENTER, CANDAHO, PALO, LEYTE						NO. OF PAGE: 3



2F PLAN

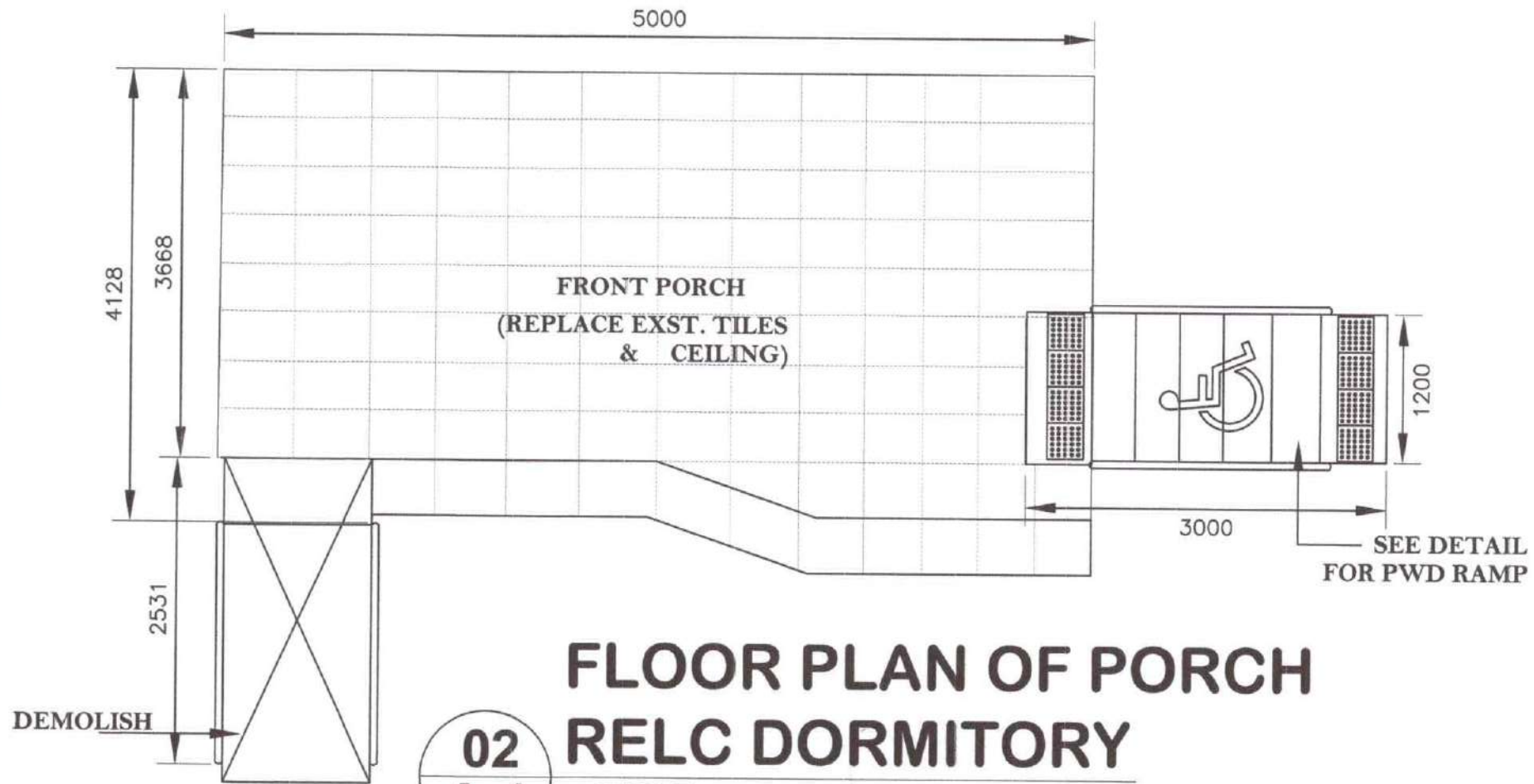
LEGEND:



-FOR REPAIR

	PROJECT TITLE:	PREPARED BY:	CHECKED BY:	NOTED BY:	RECOMMENDING APPROVAL:	APPROVED BY:	SHEET NO:
	PROPOSED REPAIR OF RELC DORMITORY-PHASE 2	KATHLEEN LESLIE B. NIJAGA ENGINEER II	RYAN JAY L. BAGON REGIONAL ENGINEER	HARVIE D. VILLAMOR, EdD CHIEF, HRDD	RONEL O AL K. FIRMO, PhD, CESO IV ASSISTANT REGIONAL DIRECTOR, RO-8	EVELYN R. FETALVERO, CESO III REGIONAL DIRECTOR, RO-8	1
	LOCATION: GOVT. CENTER, CANDAHUG, PALO LEYTE						NO. OF PAGE: 3

Doc. Ref. Code	ESSD-FO15	Rev	0
Effectivity	2.23.2023	Page	1 of 3



FLOOR PLAN OF PORCH RELC DORMITORY

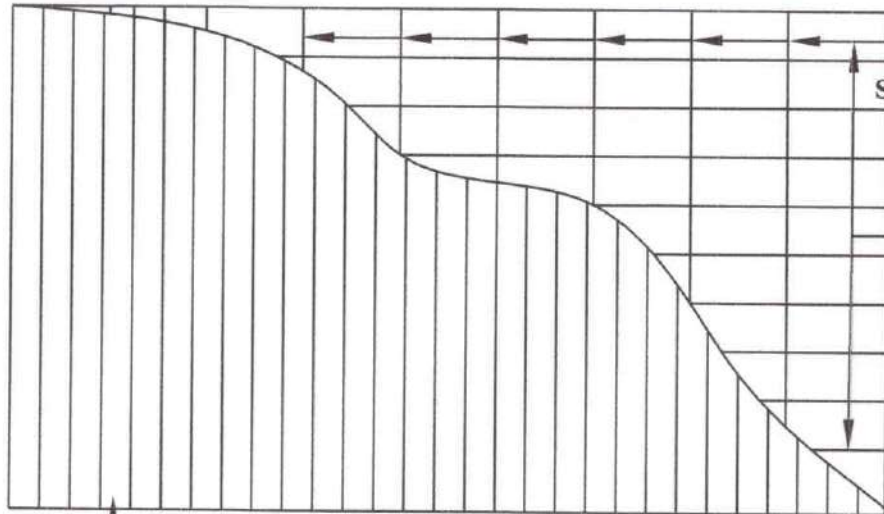
02
A-1

SCALE

1:170M

	PROJECT TITLE:	PREPARED BY:	CHECKED BY:	NOTED BY:	RECOMMENDING APPROVAL:	APPROVED BY:	SHEET NO:
	PROPOSED REPAIR OF RELC DORMITORY-PHASE 2	KATHLEEN LESLIE S. NIJAGA ENGINEER II	RYAN JAY L. BAGON REGIONAL ENGINEER	HARVIE D. VILLAMOR, EdD CHIEF, HRDD	RONELDO AL. K. FIRMO, PhD, CESO IV ASSISTANT REGIONAL DIRECTOR, RO-8	EVELYN R. FETALVERO, CESO III REGIONAL DIRECTOR, RO-8	1
	LOCATION: GOVT. CENTER, CANDAHUG, PALO LEYTE						NO. OF PAGE: 3

Doc. Ref. Code	ESSD-FO15	Rev	0
Effectivity	2.23.2023	Page	1 of 3



PRIMARY CHANNEL
SPC. @ 900mm

METAL FURRING
SPC. @ 400mm

PVC PANEL BOARD (250mmx2900mm)

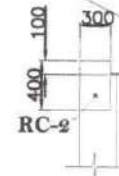
REFLECTED PORCH CEILING PLAN

02
A-2 NO TO SCALE

METAL FURRING CHANNEL
(19MMX50MMX3MM
0.5THK)
SPACING AT 400MM
O.C.

ROD SUSPENSION
HANGER W/
ADJUSTMENT
SPRING

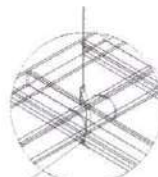
METAL CARRYING
CHANNEL
(12MMX38MMX5M)
SPACING AT 900MM
O.C.



PLAN

ROD SUSPENSION
HANGER W/
ADJUSTMENT SPRING

4.5MM THK FIBER
CEMENT CEILING BOARD
WITH PAINTED FINISHED



DETAIL
PREFORMED
WIRE
CLIP

PRIMARY
CHANNEL
FIBER CEMENT
CEILING BOARD

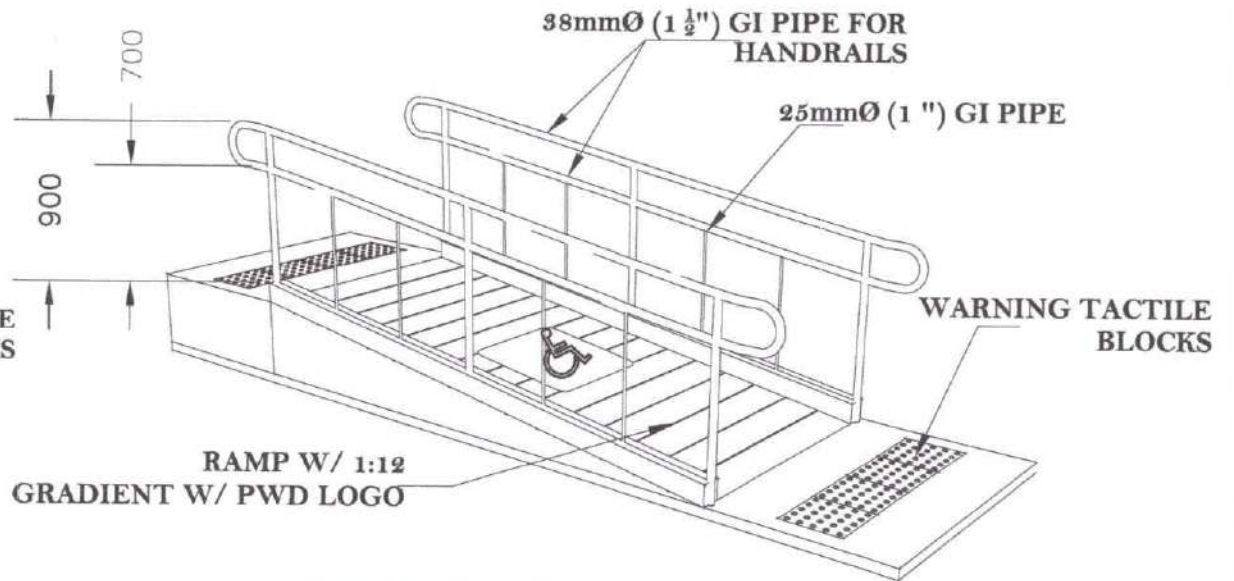
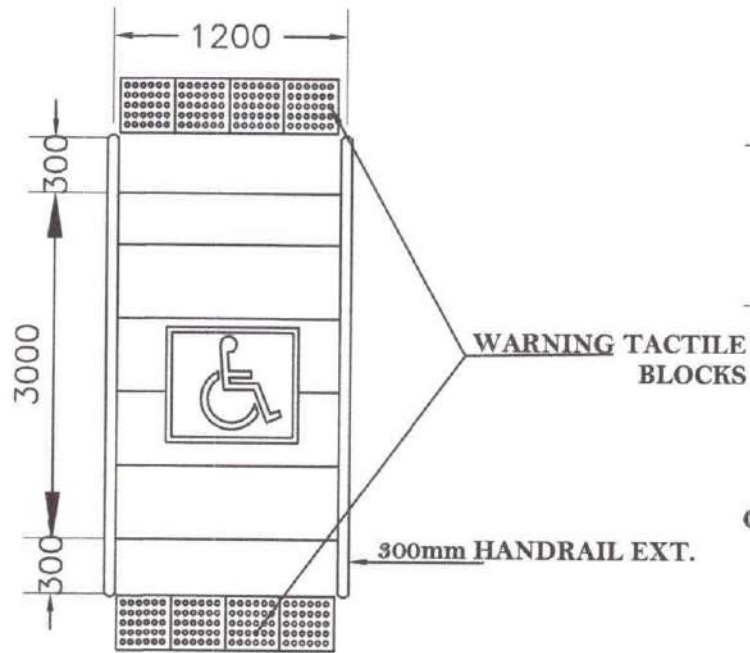
CEILING
FURRING
SECTION

01 CEILING DETAILS

A-2 NO TO SCALE

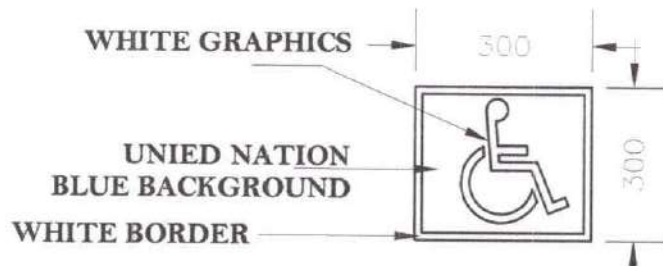
	PROJECT TITLE:	PREPARED BY:	CHECKED BY:	NOTED BY:	RECOMMENDING APPROVAL:	APPROVED BY:	SHEET NO:
	PROPOSED REPAIR OF RELC DORMITORY-PHASE 2	KATHLEEN LESLIE S. NIJAGA ENGINEER II	RYAN JAY L. BAGON REGIONAL ENGINEER	HARVIE D. VILLAMOR, EdD CHIEF, HRDD	RONEL O AL K. FIRMO, PhD, CESO IV ASSISTANT REGIONAL DIRECTOR, RO-8	EVELYN R. FETALVERO, CESO III REGIONAL DIRECTOR, RO-8	1
	LOCATION: GOVT. CENTER, CANDAHUG, PALO, LEYTE						NO. OF PAGE: 3

Doc. Ref. Code	ESSD-FO15	Rev	0
Effectivity	2.23.2023	Page	1 of 3



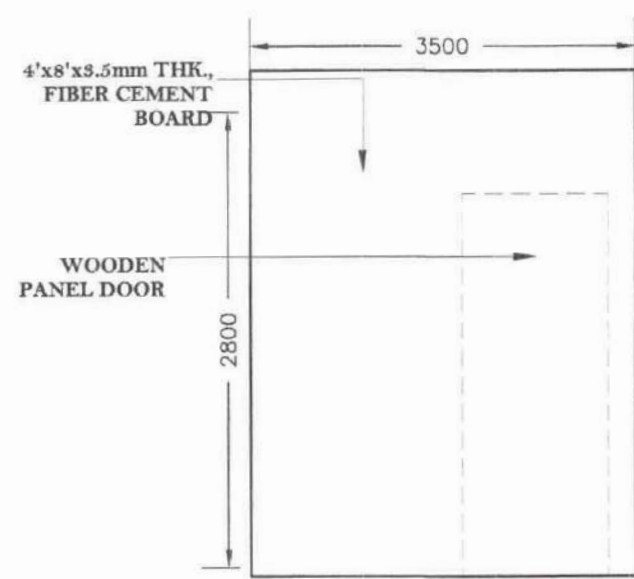
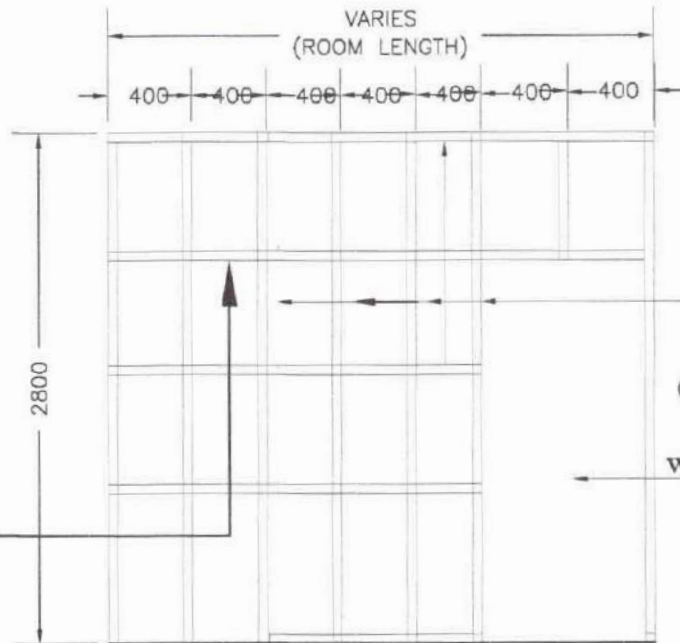
01 PWD RAMP PLAN
A-3 SCALE 1:30M

02 PWD RAMP DETAILS
A-3 SCALE 1:30M



03 PWD LOGO DETAILS
A-2 SCALE 1:30M

	PROJECT TITLE:	PREPARED BY:	CHECKED BY:	NOTED BY:	RECOMMENDING APPROVAL:	APPROVED BY:	SHEET NO:
	PROPOSED REPAIR OF RELC DORMITORY-PHASE 2	KATHLEEN LESLIE S. NIJAGA ENGINEER II	RYAN JAY L. BAGON REGIONAL ENGINEER	HARVIE D. VILLAMOR, EdD CHIEF, HRDD	RONEL CAL K. FIRMO, PhD, CESO IV ASSISTANT REGIONAL DIRECTOR, RO-8	EVELYN R. FETALVERO, CESO III REGIONAL DIRECTOR, RO-8	1
	LOCATION: GOVT. CENTER, CANDAHUG, PALO, LEYTE						NO. OF PAGE 3



PARTITION WALL DET. 2ND FLOOR

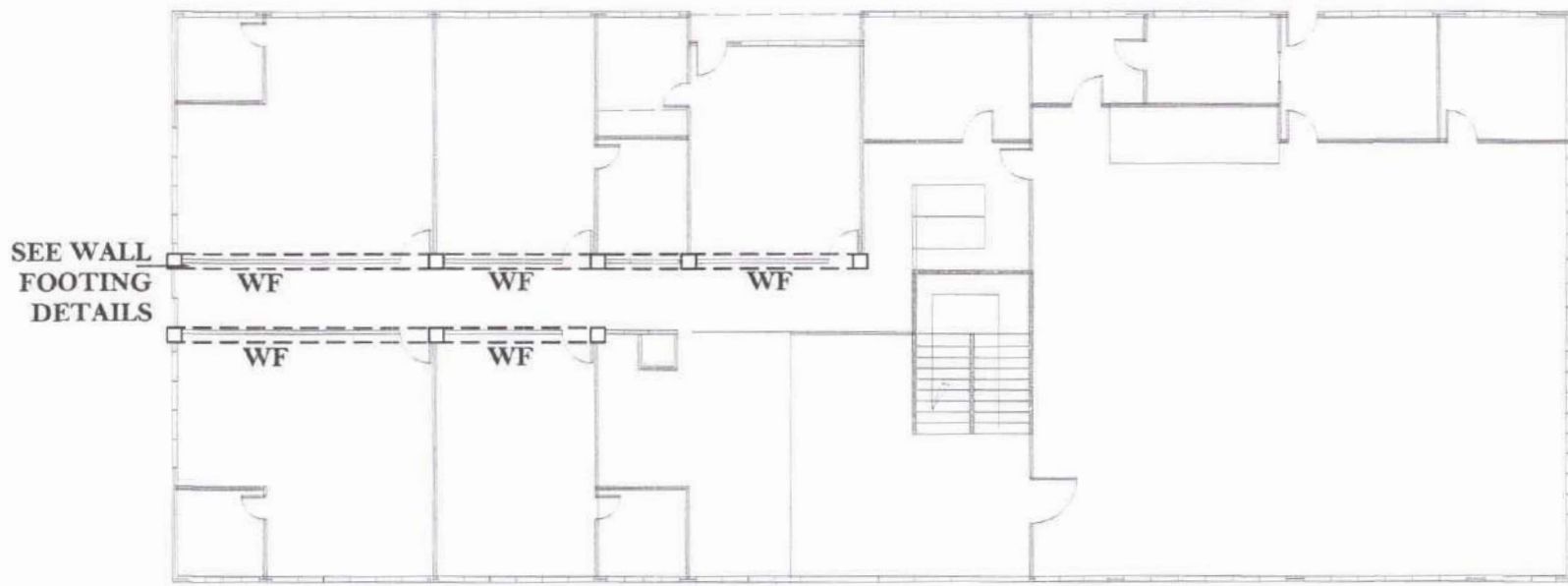
04
A-2

SCALE

1:40M

	PROJECT TITLE: PROPOSED REPAIR OF RELC DORMITORY-PHASE 2 LOCATION: GOVT. CENTER, CANDAHUG, PALO, LEYTE	PREPARED BY: KATHLEEN LESLIE S. NIJAGA ENGINEER II	CHECKED BY: RYAN J. L. BAGON REGIONAL ENGINEER	NOTED BY: HARVIE D. VILLAMOR, EdD CHIEF, HRDD	RECOMMENDING APPROVAL: RONELDO AL. K. FIRMO, PhD, CESO IV ASSISTANT REGIONAL DIRECTOR, RO-8	APPROVED BY: EVELYN R. FETALVERO, CESO III REGIONAL DIRECTOR, RO-8	SHEET NO. 1 NO. OF PAGE 3
--	--	--	--	---	---	--	------------------------------------

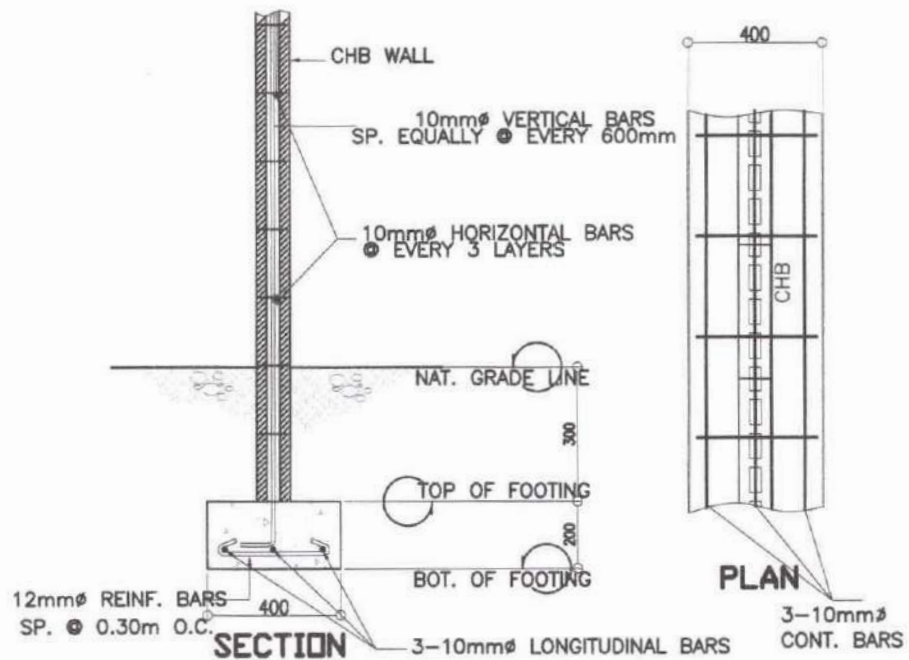
Doc. Ref. Code	ESSD-FO15	Rev	0
Effectivity	2.23.2023	Page	1 of 3



01 **GF WALL FOOTING PLAN**
S-4 NO TO SCALE

	PROJECT TITLE:	PREPARED BY:	CHECKED BY:	NOTED BY:	RECOMMENDING APPROVAL:	APPROVED BY:	SHEET NO:
	PROPOSED REPAIR OF RELC DORMITORY-PHASE 2 LOCATION: GOVT. CENTER, CANDAHUG, PALO LEYTE	KATHLEEN LESLIE S. NIJAGA ENGINEER II	RYAN JAY L. BAGON REGIONAL ENGINEER	HARVIE D. VILLAMOR, EdD CHIEF, HRDD	RONELOAL K. FIRMO, PhD, CESO IV ASSISTANT REGIONAL DIRECTOR, RO-8	EVELYN R. FETALVERO, CESO III REGIONAL DIRECTOR, RO-8	1 NO. OF PAGE: 3

Doc. Ref. Code	ESSD-FO15	Rev	0
Effectivity	2.23.2023	Page	1 of 3



01
S-4

WF DET. (GF CHB)

SCALE 1:40M

	PROJECT TITLE:	PREPARED BY:	CHECKED BY:	NOTED BY:	RECOMMENDING APPROVAL:	APPROVED BY:	SHEET NO.:
	PROPOSED REPAIR OF RELC DORMITORY-PHASE 2 LOCATION: GOVT. CENTER, CANDAHUG, PALO, LEYTE	KATHLEEN MESLINES NIJAGA ENGINEER II	RYAN JAY L. BAGON REGIONAL ENGINEER	HARVIE D. VILLAMOR, EdD CHIEF, HRDD	ROMULO AL K. FIRMO, PhD, CESO IV ASSISTANT REGIONAL DIRECTOR, RC-8	EVELYN R. FETALVERO, CESO III REGIONAL DIRECTOR, RO-8	1 NO. OF PAGE 3

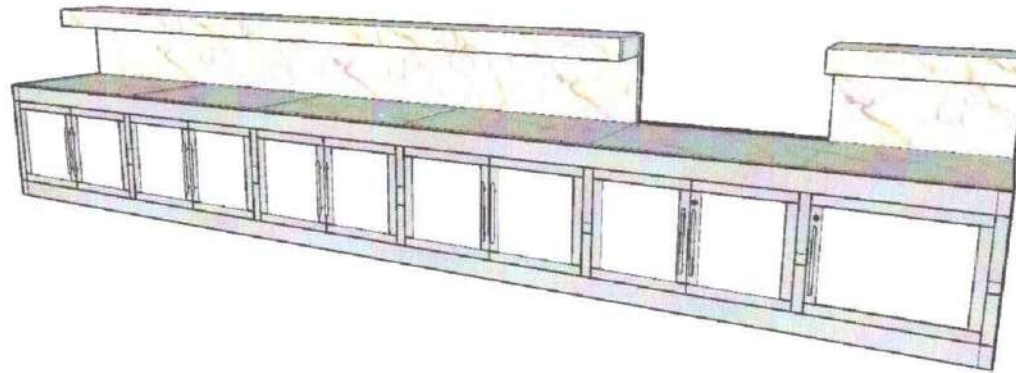


01
A-3 **FRONT DESK PERSPECTIVE**

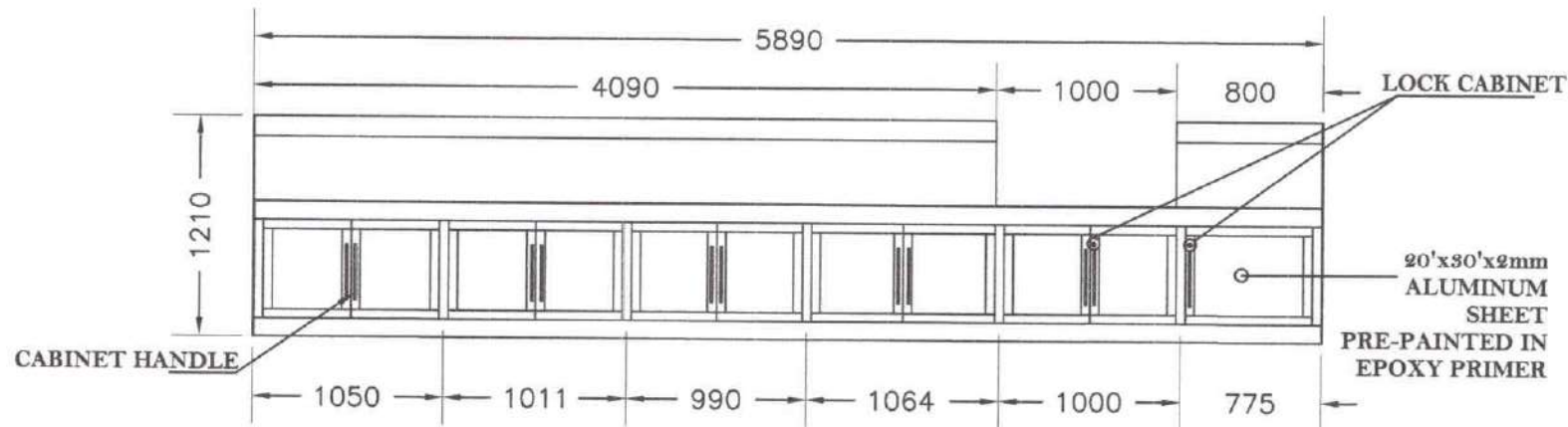
NO TO SCALE

	PROJECT TITLE	PREPARED BY:	CHECKED BY:	NOTED BY:	RECOMMENDING APPROVAL:	APPROVED BY:	SHEET NO.
	PROPOSED REPAIR OF RELC DORMITORY-PHASE 2 LOCATION: GOVT. CENTER, CANDAHUG, PALO, LEYTE	AR. CARESSE M. GALLARDO GOVT. INTERSHIP PROG.	RYAN JAY L. BAGON REGIONAL ENGINEER	HARVIE D. VILLAMOR, EdD CHIEF, HRDD	RONELO AL K. FIRMO, PhD, CESO IV ASSISTANT REGIONAL DIRECTOR, RO-8	EVELYN R. FETALVERO, CESO III REGIONAL DIRECTOR, RO-8	1 NO. OF PAGE: 3

Doc. Ref. Code	ESSD-FO15	Rev	0
Effectivity	2.23.2023	Page	1 of 3



ISOMETRIC LAYOUT



02
A-3

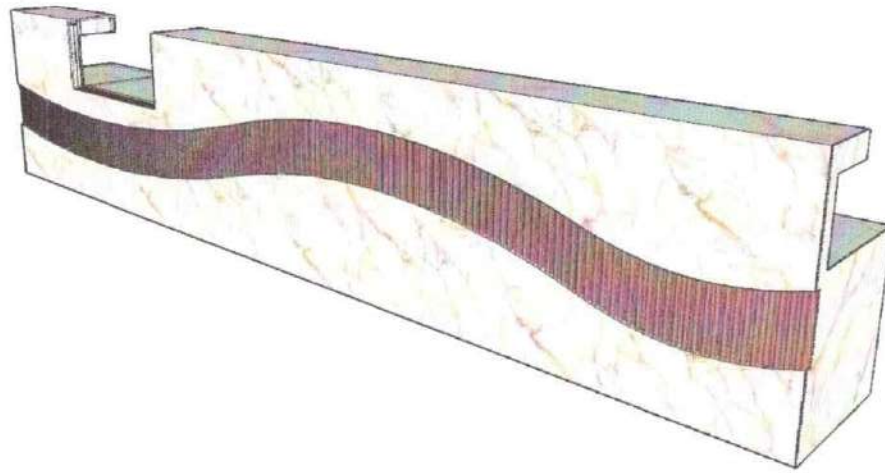
FRONT DESK - REAR ELEV.

SCALE

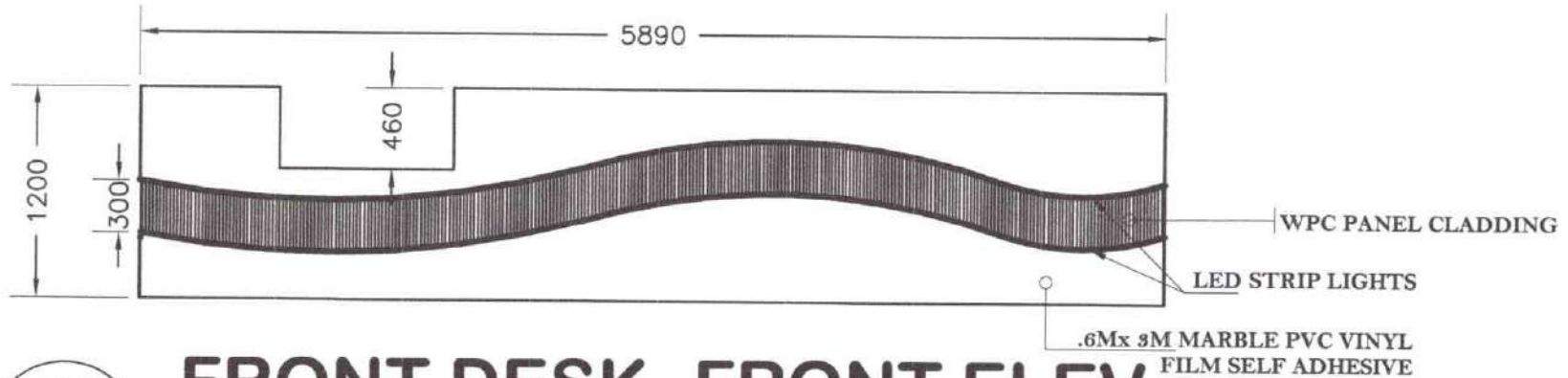
1:40M

	PROJECT TITLE:	PREPARED BY:	CHECKED BY:	NOTED BY:	RECOMMENDING APPROVAL:	APPROVED BY:	SHEET NO.
	PROPOSED REPAIR OF RELC DORMITORY-PHASE 2	AR. CARESSE M. GALLARDO	RYAN JAY L. BAGON	HARVIE D. VILLAMOR, EdD	RONEL D. AL K. FIRMO, PhD, CESO IV	EVELYN R. FETALVERO, CESO III	1
	LOCATION: GOVT. CENTER, CANDAHUG, PALO, LEYTE	GOVT. INTERSHIP PROG.	REGIONAL ENGINEER	CHIEF, HRDD	ASSISTANT REGIONAL DIRECTOR, RO-8	REGIONAL DIRECTOR, RO-8	NO. OF PAGE 3

Doc. Ref. Code	ESSD-FO15	Rev	0
Effectivity	2.23.2023	Page	1 of 3



ISOMETRIC LAYOUT



03
A-3

FRONT DESK -FRONT ELEV.

SCALE

1:40M

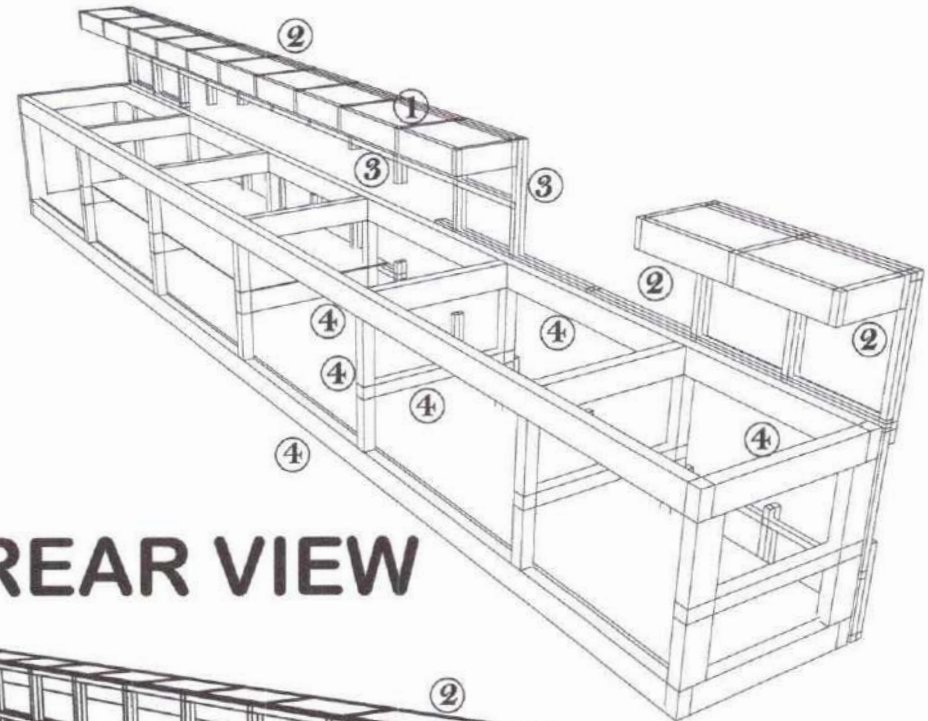
	PROJECT TITLE:	PREPARED BY:	CHECKED BY:	NOTED BY:	RECOMMENDING APPROVAL:	APPROVED BY:	SHEET NO:
	PROPOSED REPAIR OF RELC DORMITORY-PHASE 2	AR. CARESSE M. GALLARDO	RYAN JAY L. BAGON	HARVIE D. VILLAMOR, EdD	RONELO A. K. FIRMO, PhD, CESO IV	EVELYN R. FETALVERO, CESO III	1
	LOCATION: GOVT. CENTER, CANDAHLUG, PALO LEYTE	GOV'T. INTERSHIP PROG.	REGIONAL ENGINEER	CHIEF, HRDD	ASSISTANT REGIONAL DIRECTOR, RO-8	REGIONAL DIRECTOR, RO-8	NO. OF PAGE: 3

Doc. Ref. Code	ESSD-FO15	Rev	0
Effectivity	2.23.2023	Page	1 of 3

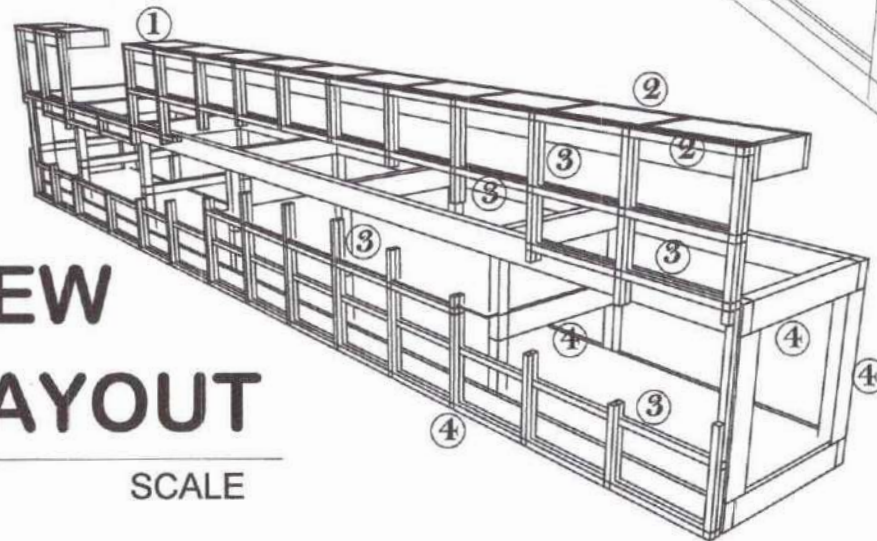
FRONT DESK FRAMING

MARK	DESCRIPTION
①	1"x1"x 2mm THK, TUBULAR COUNTER TOP FRAME
②	1"x2"x 2mm THK, TUBULAR (HOR.) COUNTER TOP FRAME
③	1"x1"x 2mm THK, TUBULAR
④	2"x4"x 2mm THK, TUBULAR (VERT. & HOR.) FRAME

NOTE:
STEEL TO STEEL
CONNECTION-FULLY WELDED



REAR VIEW



FRONT VIEW

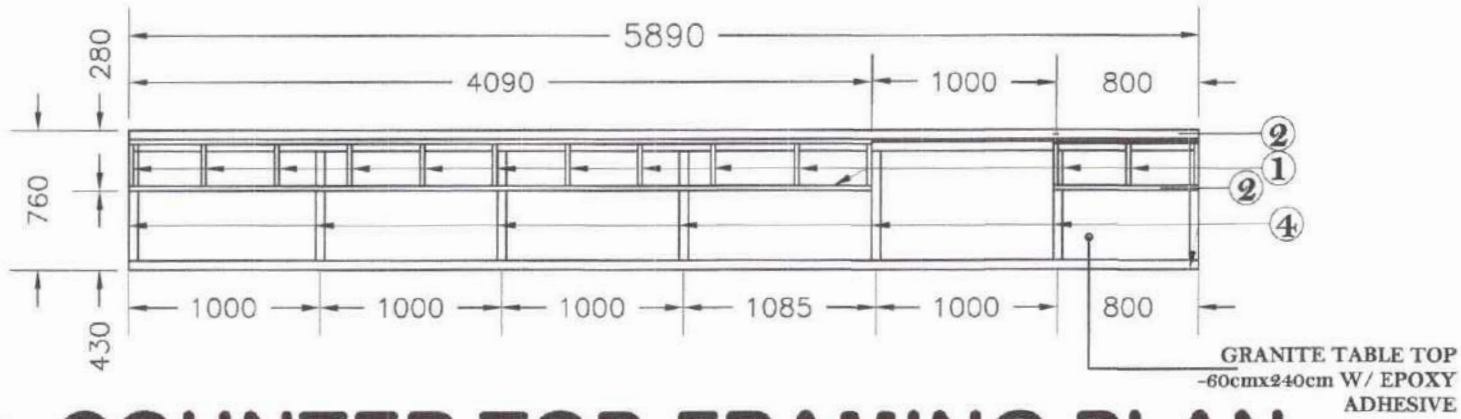
ISOMETRIC LAYOUT

01
S-1

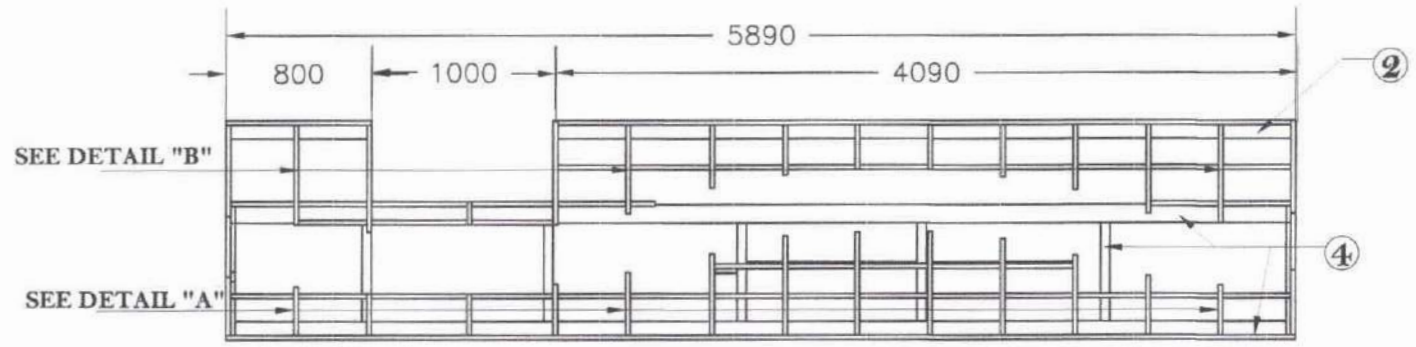
NO TO SCALE

	PROJECT TITLE:	PREPARED BY:	CHECKED BY:	NOTED BY:	RECOMMENDING APPROVAL:	APPROVED BY:	SHEET NO:
	PROPOSED REPAIR OF RELC DORMITORY-PHASE 2 LOCATION: GOVT. CENTER, CANDAHUG, PALO LEYTE	AR CARESSA M. GALLARDO GOVT. INTERSHIP PROG.	RYAN JAY L. BAGON REGIONAL ENGINEER	HARVIE D. VILLAMOR, EdD CHIEF, HRDD	RONEL AL K. FIRMO, PhD, CESO IV ASSISTANT REGIONAL DIRECTOR, RO-8	EVELYN R. FETALVERO, CESO III REGIONAL DIRECTOR, RO-8	1 NO. OF PAGE: 3

Doc. Ref. Code	E8SD-F015	Rev	0
Effectivity	2.23.2023	Page	1 of 3



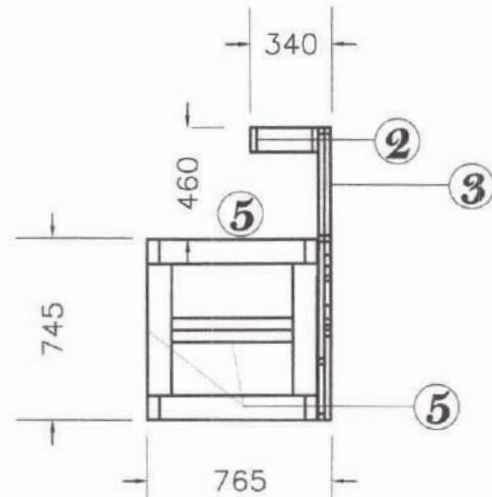
02
S-1 **COUNTER TOP-FRAMING PLAN**
SCALE 1:40M



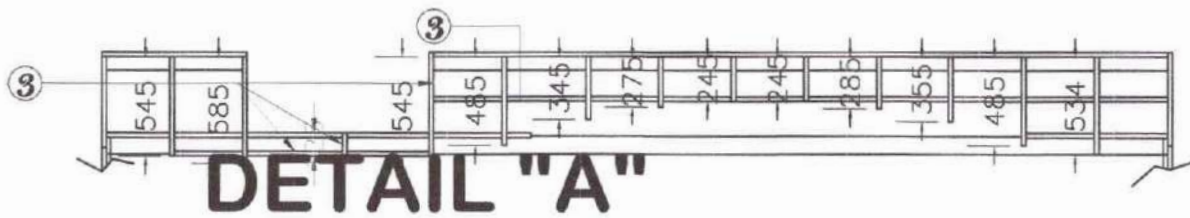
03
S-1 **FRONT DESK -FRONT ELEV.**
SCALE 1:40M

	PROJECT TITLE:	PREPARED BY:	CHECKED BY:	NOTED BY:	RECOMMENDING APPROVAL:	APPROVED BY:	SHEET NO:
	PROPOSED REPAIR OF RELC DORMITORY-PHASE 2	AR. CARESS M. GALLARDO	RYAN JAY L. BAGON REGIONAL ENGINEER	HARVIE D. VILLAMOR, EdD CHIEF, HRDD	RONELON K. FIRMO, PhD, CESO IV ASSISTANT REGIONAL DIRECTOR, RO-8	EVELYN R. FETALVERO, CESO III REGIONAL DIRECTOR, RO-8	1
	LOCATION: GOVT. CENTER, CANDAHUG, PALO LEYTE	GOVT. INTERSHIP PROG.					NO. OF PAGE: 3

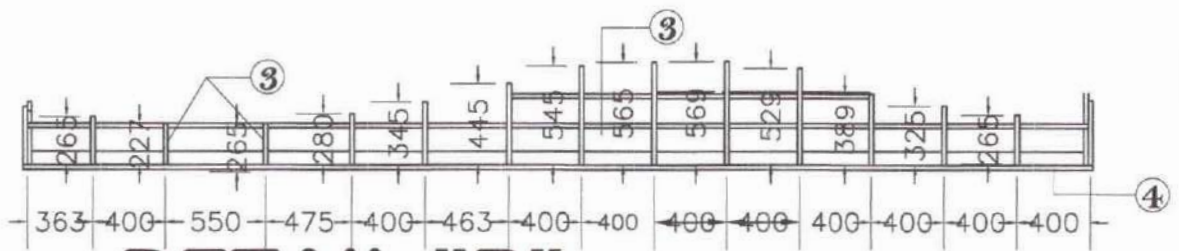
Doc. Ref. Code	ESSD-F015	Rev	0
Effectivity	2.23.2023	Page	1 of 3



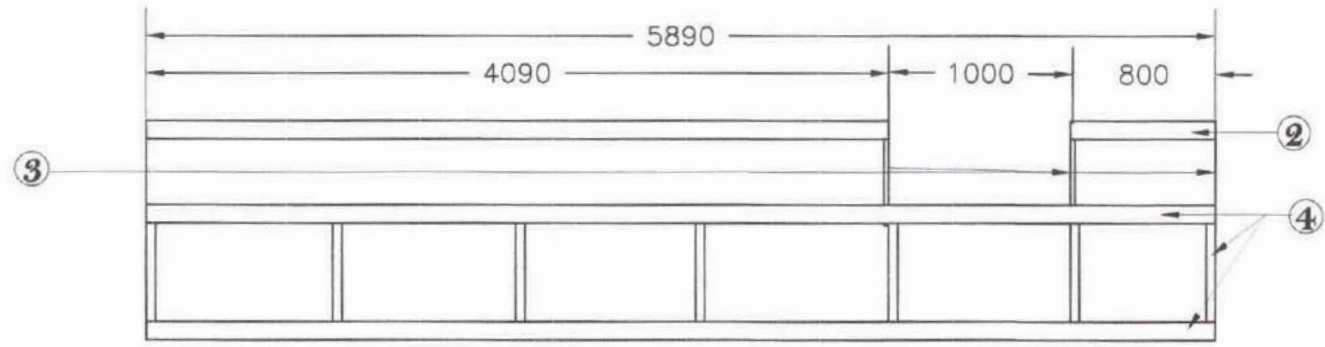
04 SIDE ELEV.
S-1 NO TO SCALE



DETAIL "A"



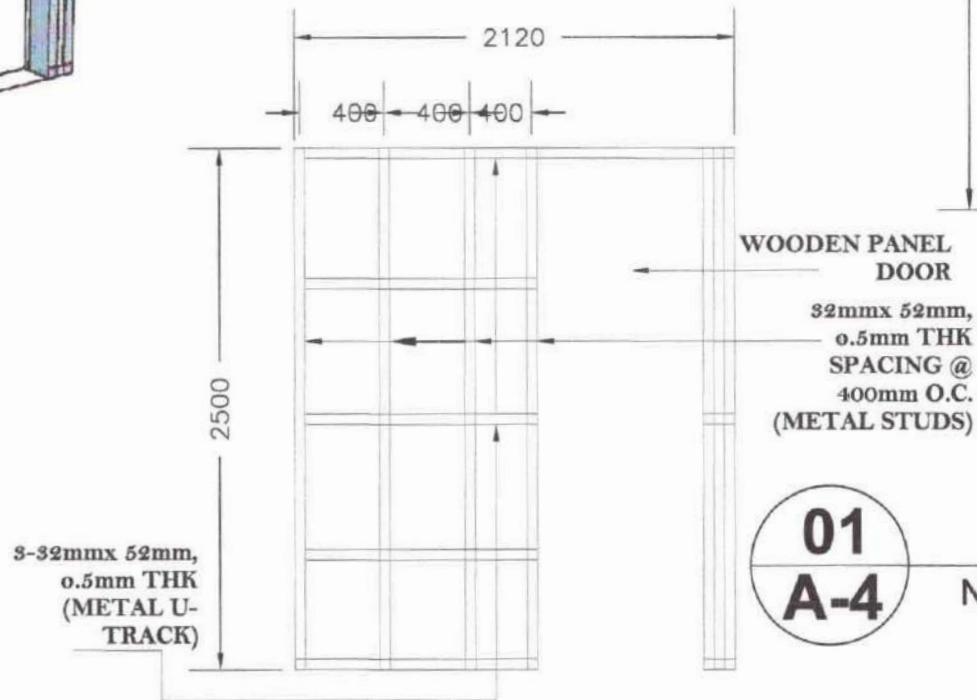
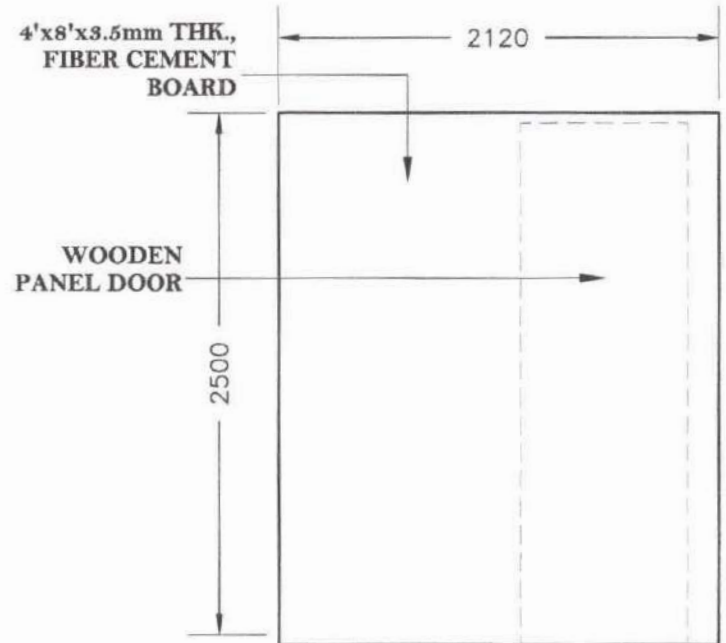
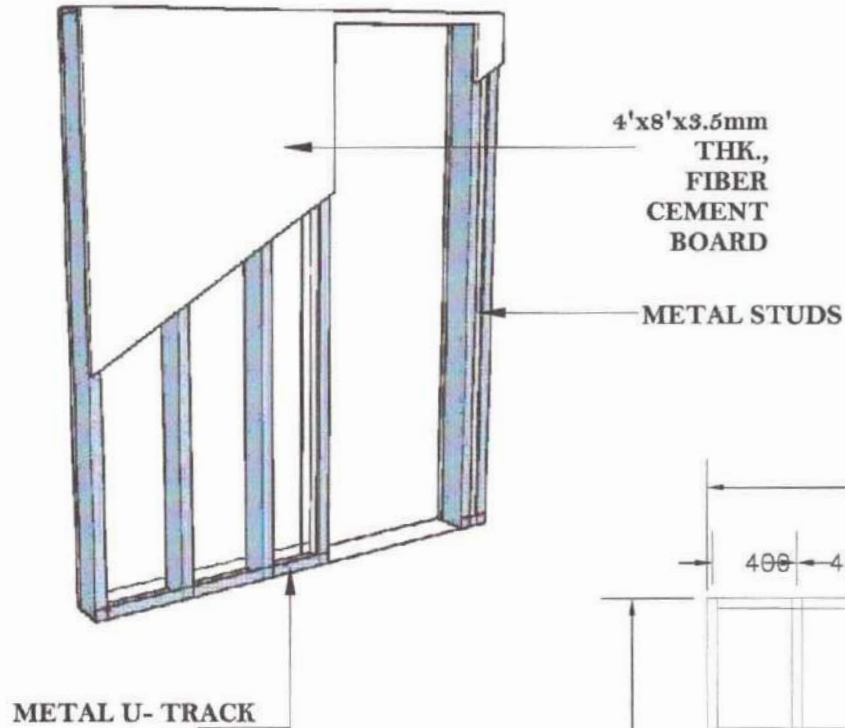
DETAIL "B"



05 FRONT DESK -REAR ELEV.
S-1 SCALE 1:40M

	PROJECT TITLE:	PREPARED BY:	CHECKED BY:	NOTED BY:	RECOMMENDING APPROVAL:	APPROVED BY:	SHEET NO.
	PROPOSED REPAIR OF RELC DORMITORY-PHASE 2 LOCATION: GOVT. CENTER, CANDAHUG, PALO LEYTE	AR. CABELLE M. GALLARDO GOVT. INTERSHIP PROG.	RYAN JAY L. BAGON REGIONAL ENGINEER	HARVIE D. VILLAMOR, EdD CHIEF, HRDD	RONEL DAL K. FIRMO, PhD, CESO IV ASSISTANT REGIONAL DIRECTOR, RO-8	EVELYN R. FETALVERO, CESO III REGIONAL DIRECTOR, RO-8	1 NO. OF PAGE: 3

Doc. Ref. Code	ESSD-FO15	Rev	0
Effectivity	2.23.2023	Page	1 of 3



METAL STUDS DETAIL

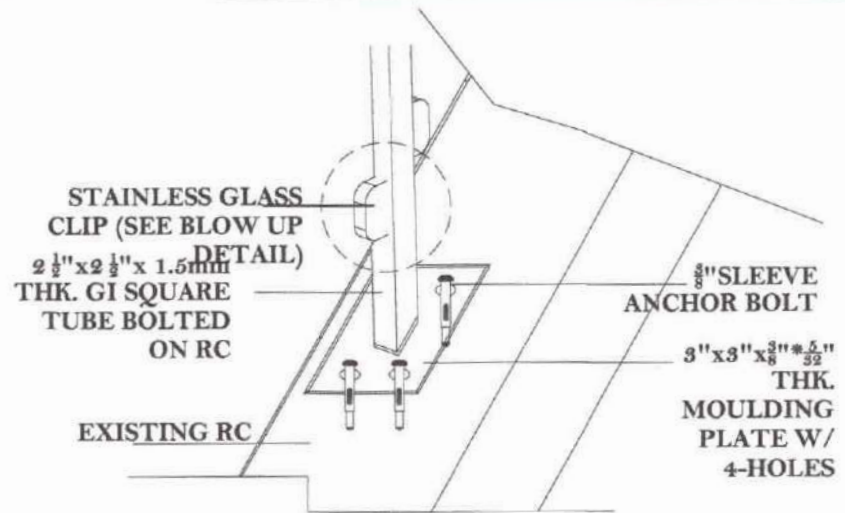
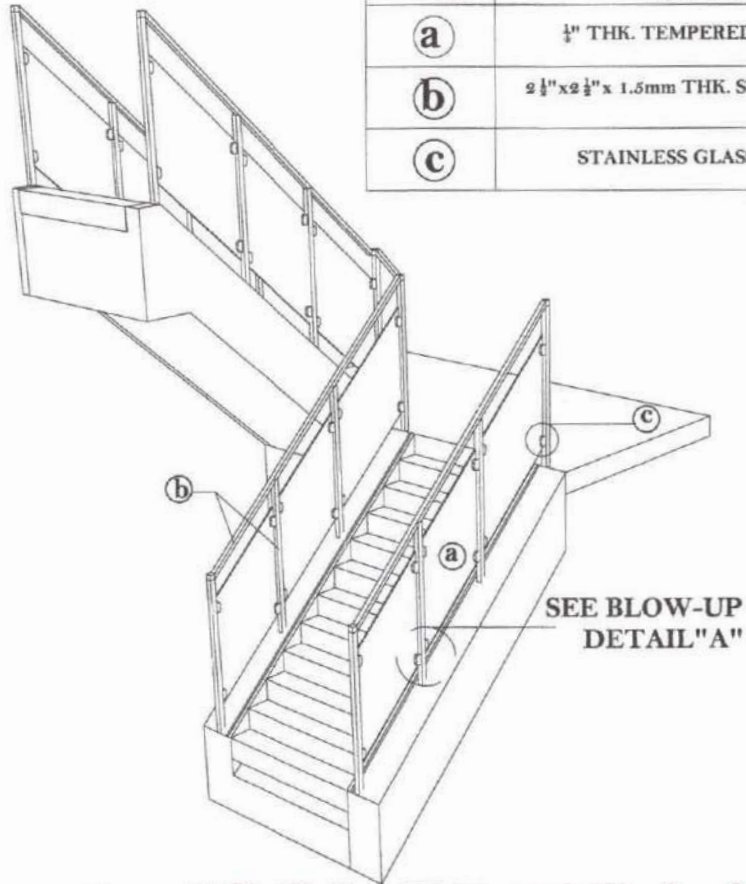
01
A-4

NO TO SCALE

	PROJECT TITLE:	PREPARED BY:	CHECKED BY:	NOTED BY:	RECOMMENDING APPROVAL:	APPROVED BY:	SHEET NO:
	PROPOSED REPAIR OF RELC DORMITORY-PHASE 2 LOCATION: GOVT. CENTER, CANDAHUG, PALO LEYTE	AR. CARESEM, GALLARDO GOVT. INTERSHIP PROG.	RYAN JAV L. BAGON REGIONAL ENGINEER	HARVIE D. VILLAMOR, EdD CHIEF, HRDD	RONELO A. X. FIRMO, PhD, CESO IV ASSISTANT REGIONAL DIRECTOR, RO-8	EVELYN R. FETALVERO, CESO III REGIONAL DIRECTOR, RO-8	

Doc. Ref. Code	E8SD-FO15	Rev	0
Effectivity	2.23.2023	Page	1 of 3

STAIRS DETAILS	
MARK	DESCRIPTION
(a)	1/4" THK. TEMPERED GLASS
(b)	2 1/2" x 2 1/2" x 1.5mm THK. STAINLESS SQ. TUBE
(c)	STAINLESS GLASS CLIP



DETAIL "A"

01 ISOMETRIC LAYOUT
A-5 NO TO SCALE

	PROJECT TITLE:	PREPARED BY:	CHECKED BY:	NOTED BY:	RECOMMENDING APPROVAL:	APPROVED BY:	SHEET NO:
	PROPOSED REPAIR OF RELC DORMITORY-PHASE 2 LOCATION: GOVT. CENTER, CANDAHUG, PALO LEYTE	KATHLEEN LESLIE S. NIJAGA ENGINEER II	RYAN JAY L. BAGON REGIONAL ENGINEER	HARVIE D. VILLAMOR, EdD CHIEF, HRDD	RONEL ALONSO FIRMO, PhD, CESO IV ASSISTANT REGIONAL DIRECTOR, RO-8	EVELYN R. FETALVERO, CESO III REGIONAL DIRECTOR, RO-8	1 NO. OF PAGE: 3

Doc. Ref. Code	ESSD-FO15	Rev	0
Effectivity	2.23.2023	Page	1 of 3